

Lotto no.: L244412

Nazione/Tipo: Europa

Collezione Messina, con 160 cartoline d'epoca, fine 800, fino agli anni 20, viaggiate e non viaggiate, animate.

Prezzo: 550 eur

[[Vai al sito www.matirafil.com](http://www.matirafil.com)]

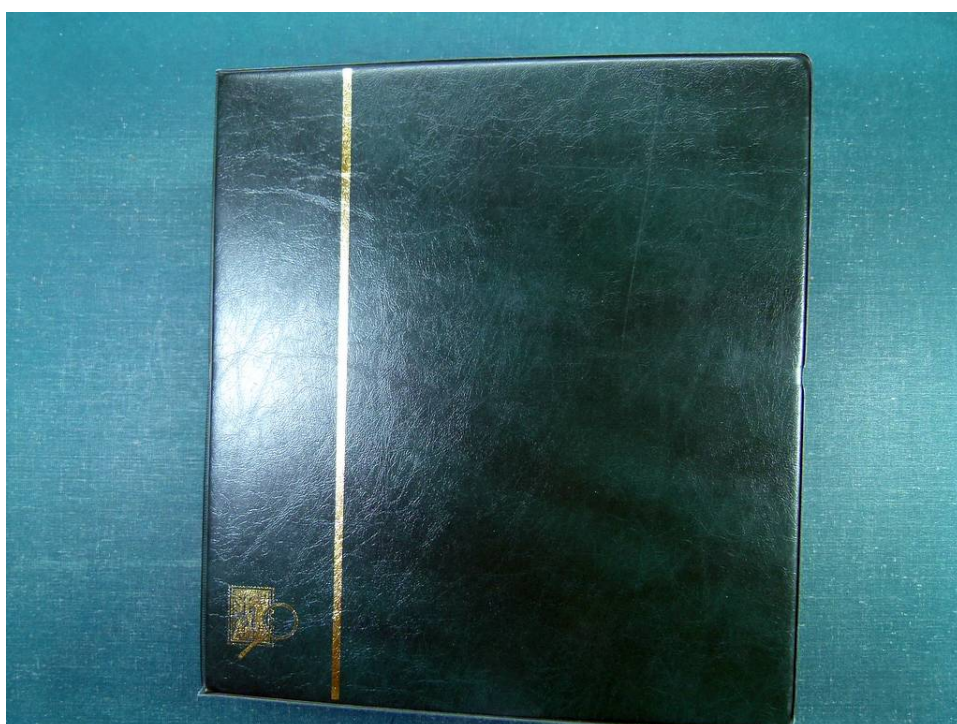


Foto nr.: 2



Foto nr.: 3



Foto nr.: 4

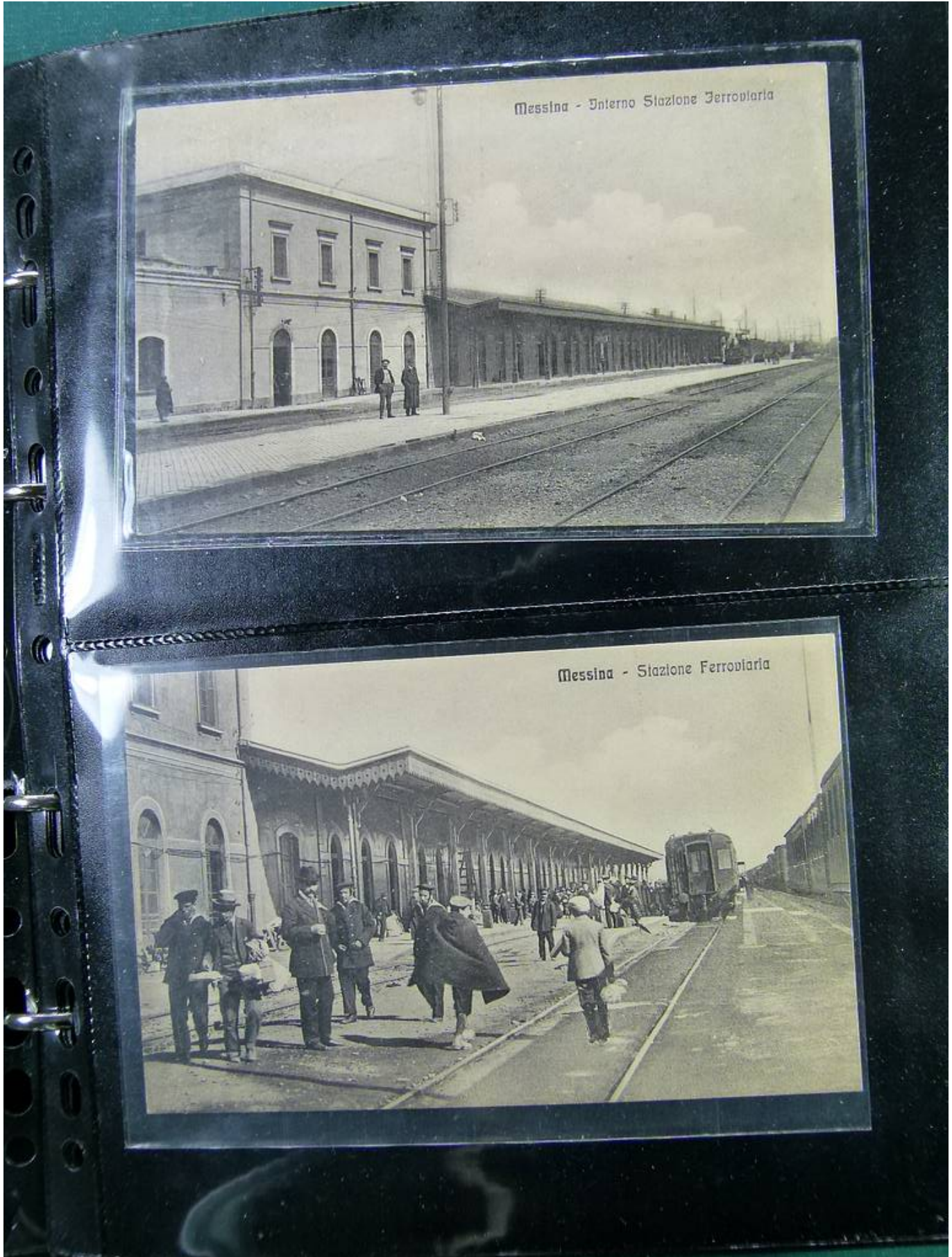


Foto nr.: 5

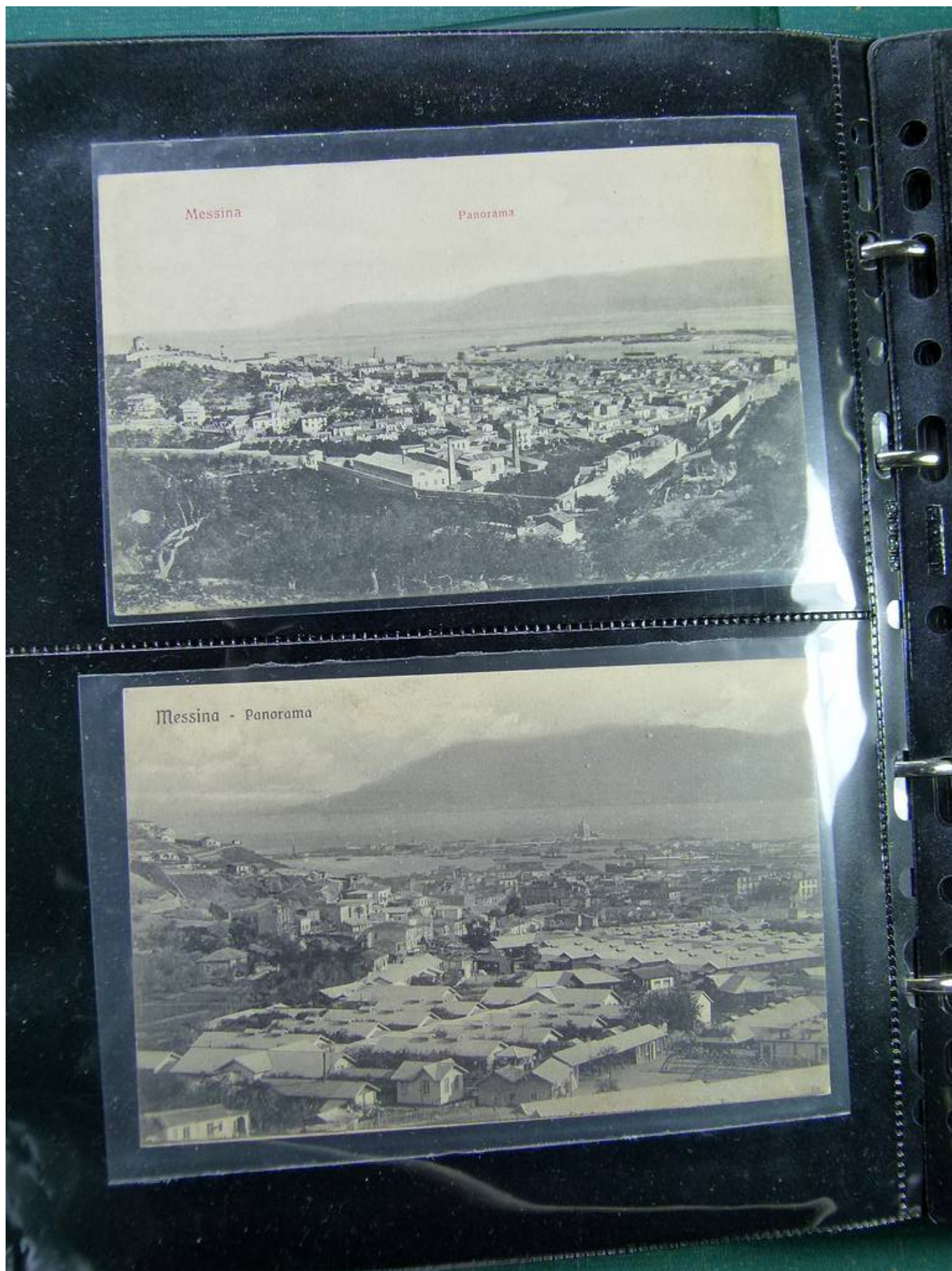


Foto nr.: 6

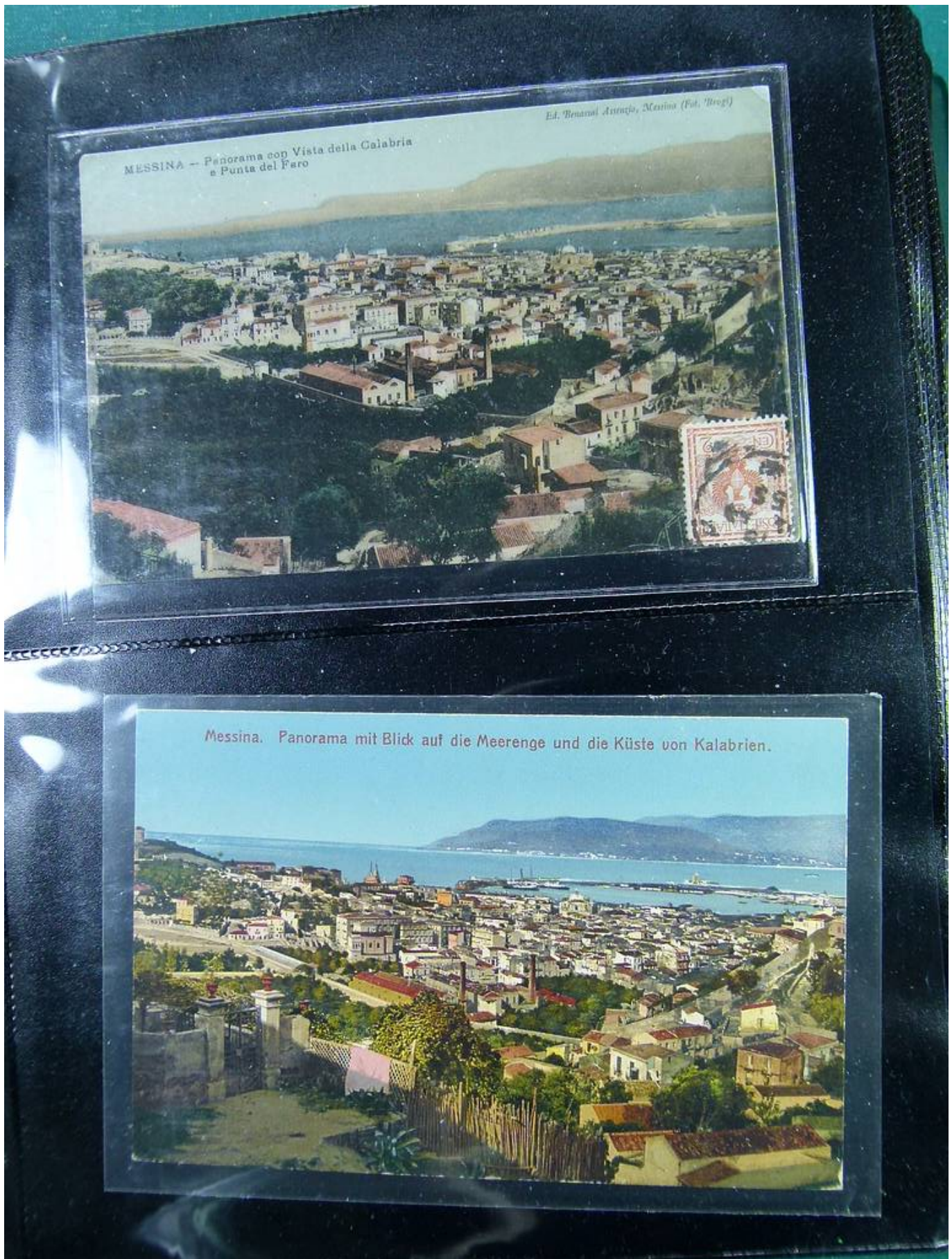


Foto nr.: 7



Foto nr.: 8



Foto nr.: 9



Foto nr.: 10

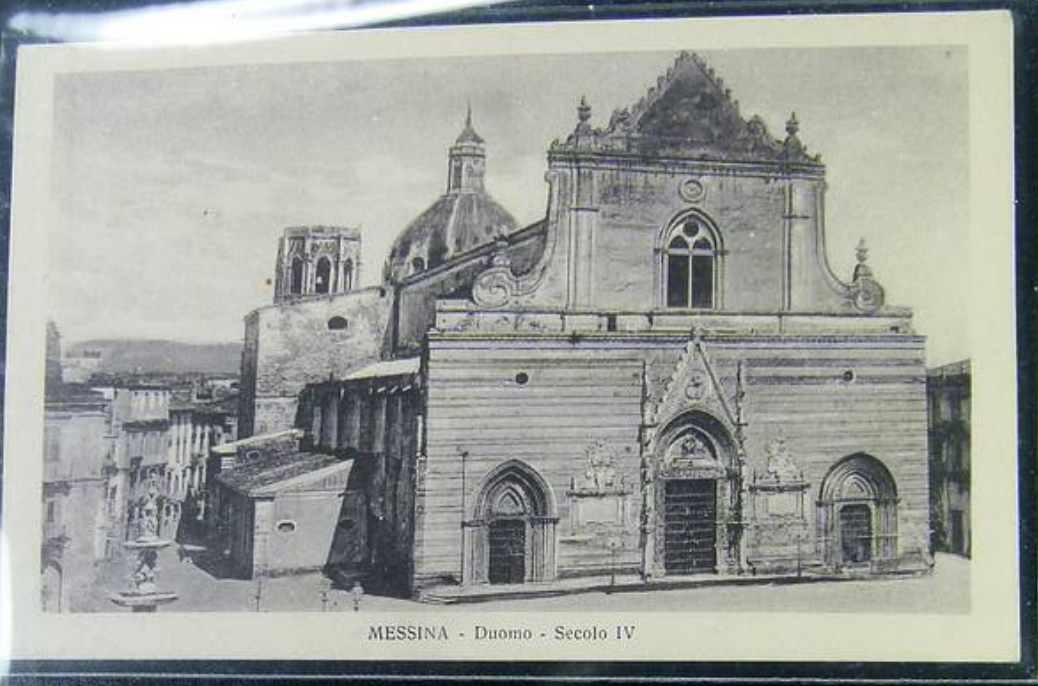


Foto nr.: 11

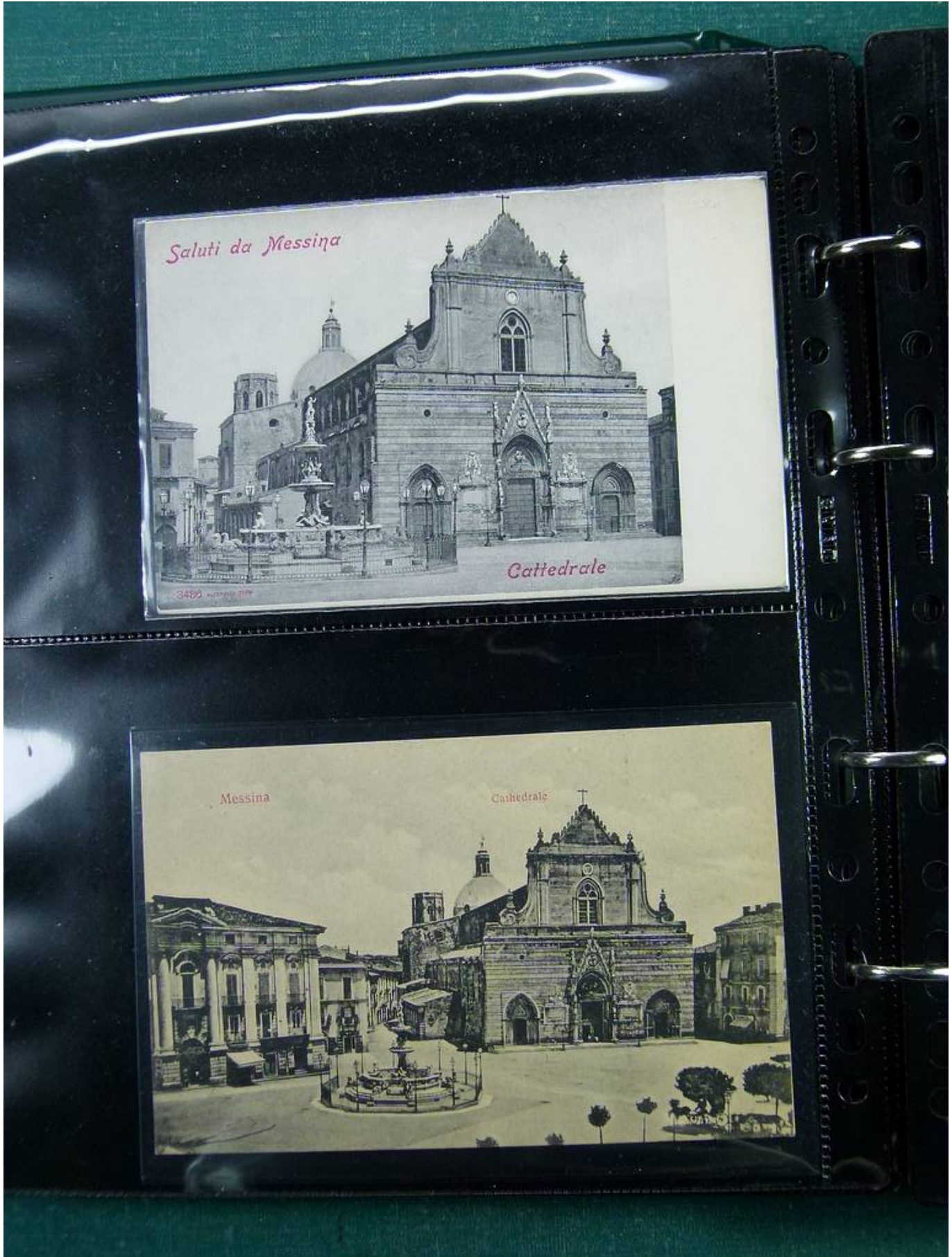


Foto nr.: 12



Foto nr.: 13

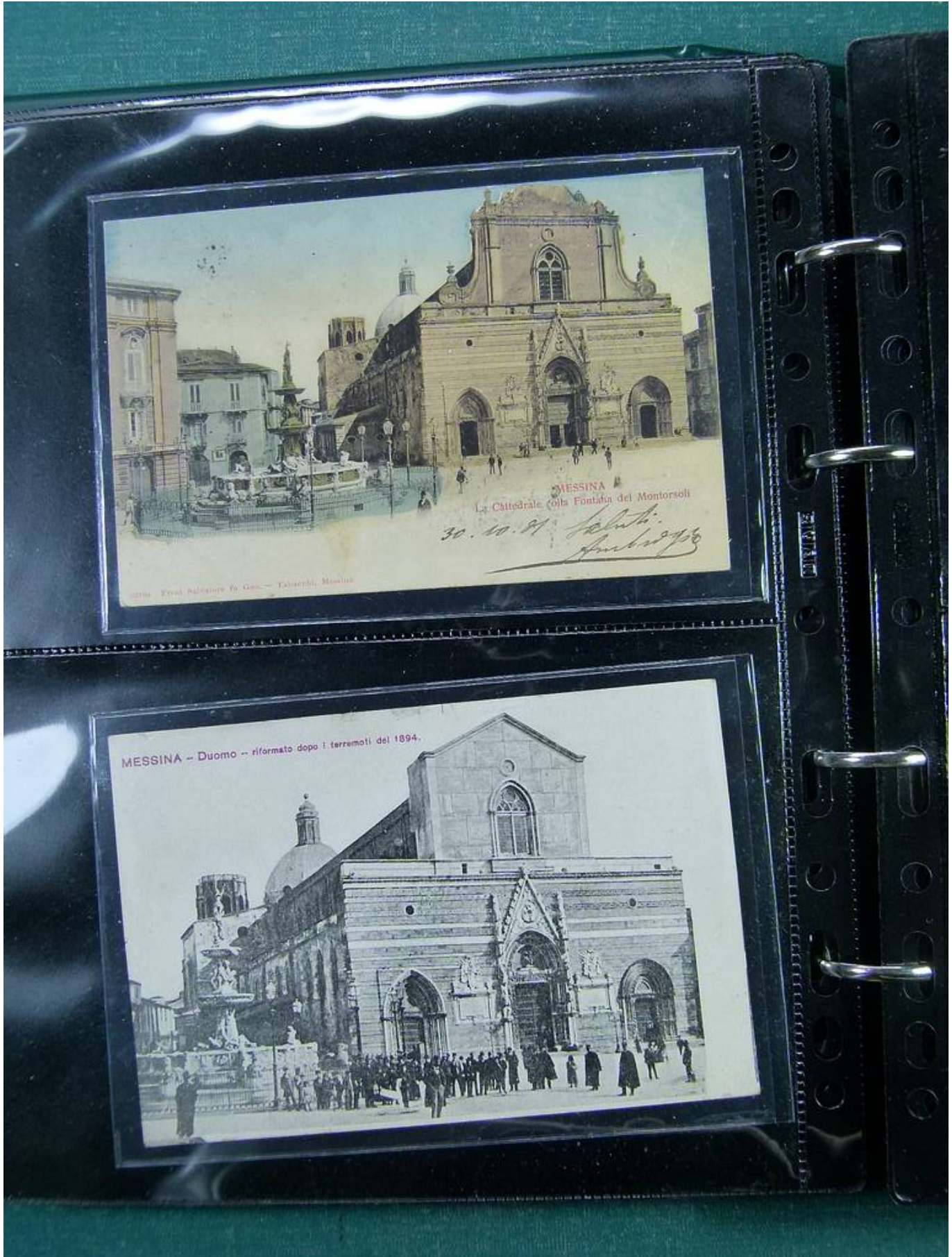


Foto nr.: 14

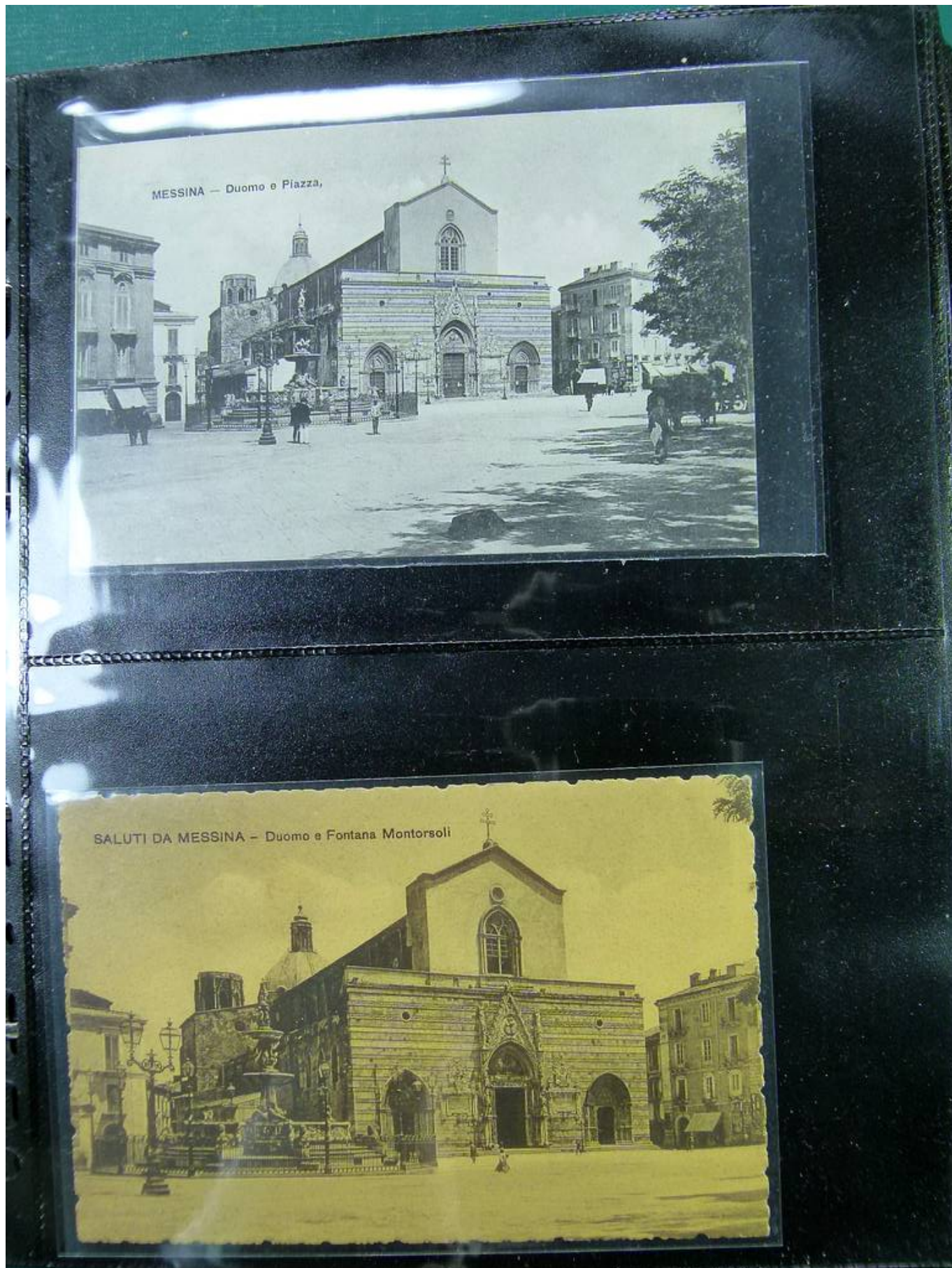


Foto nr.: 15



Foto nr.: 16



Foto nr.: 18

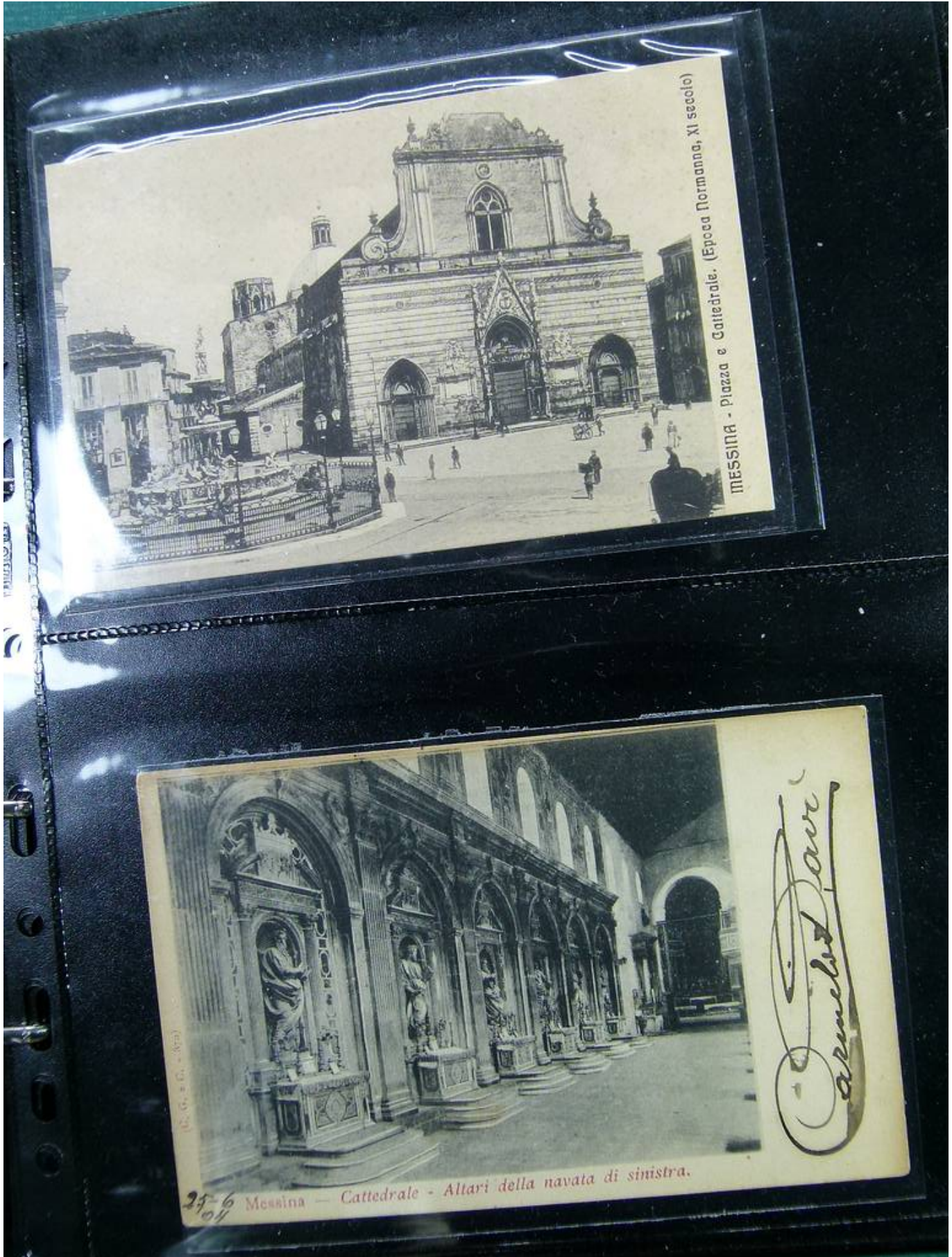


Foto nr.: 19

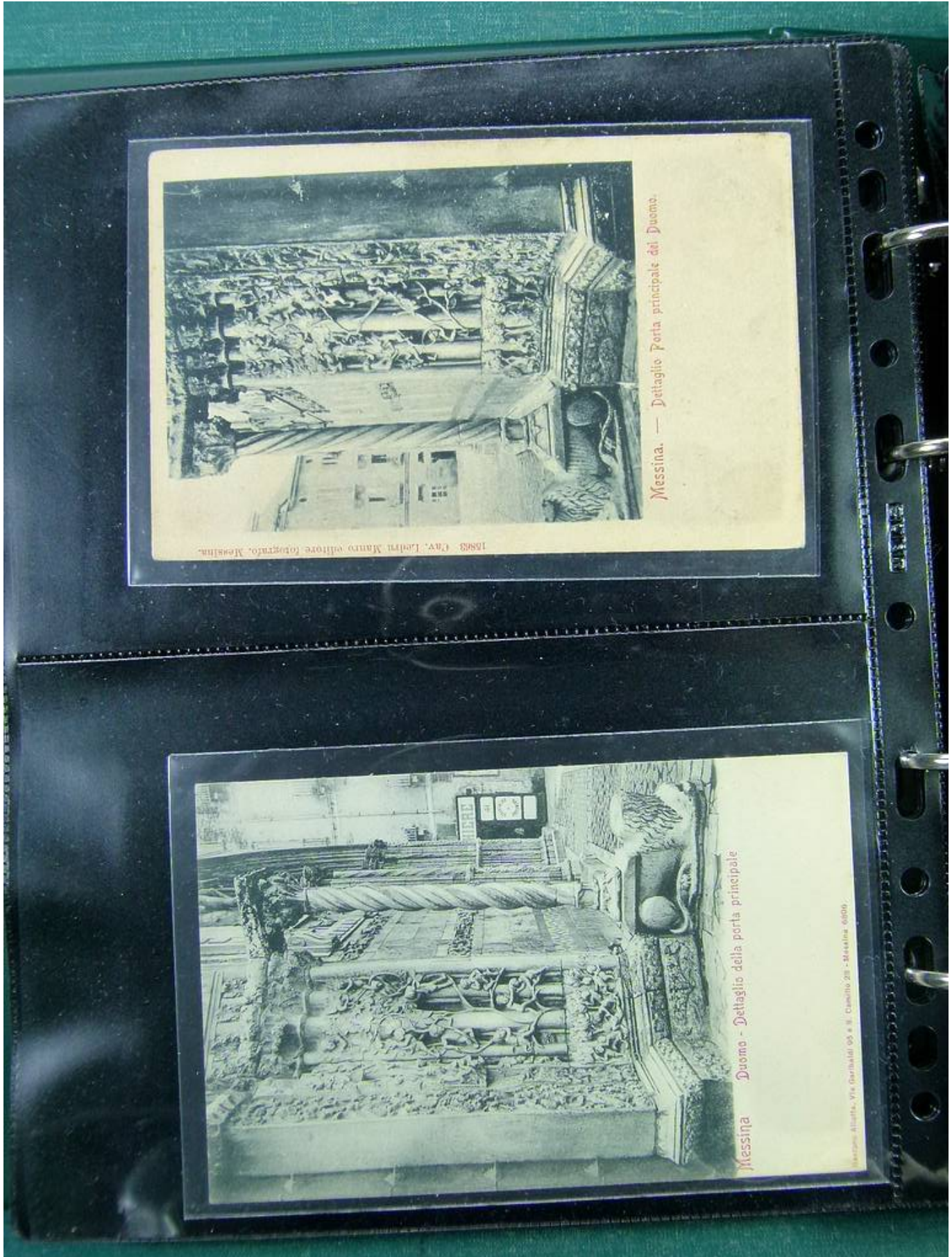


Foto nr.: 20

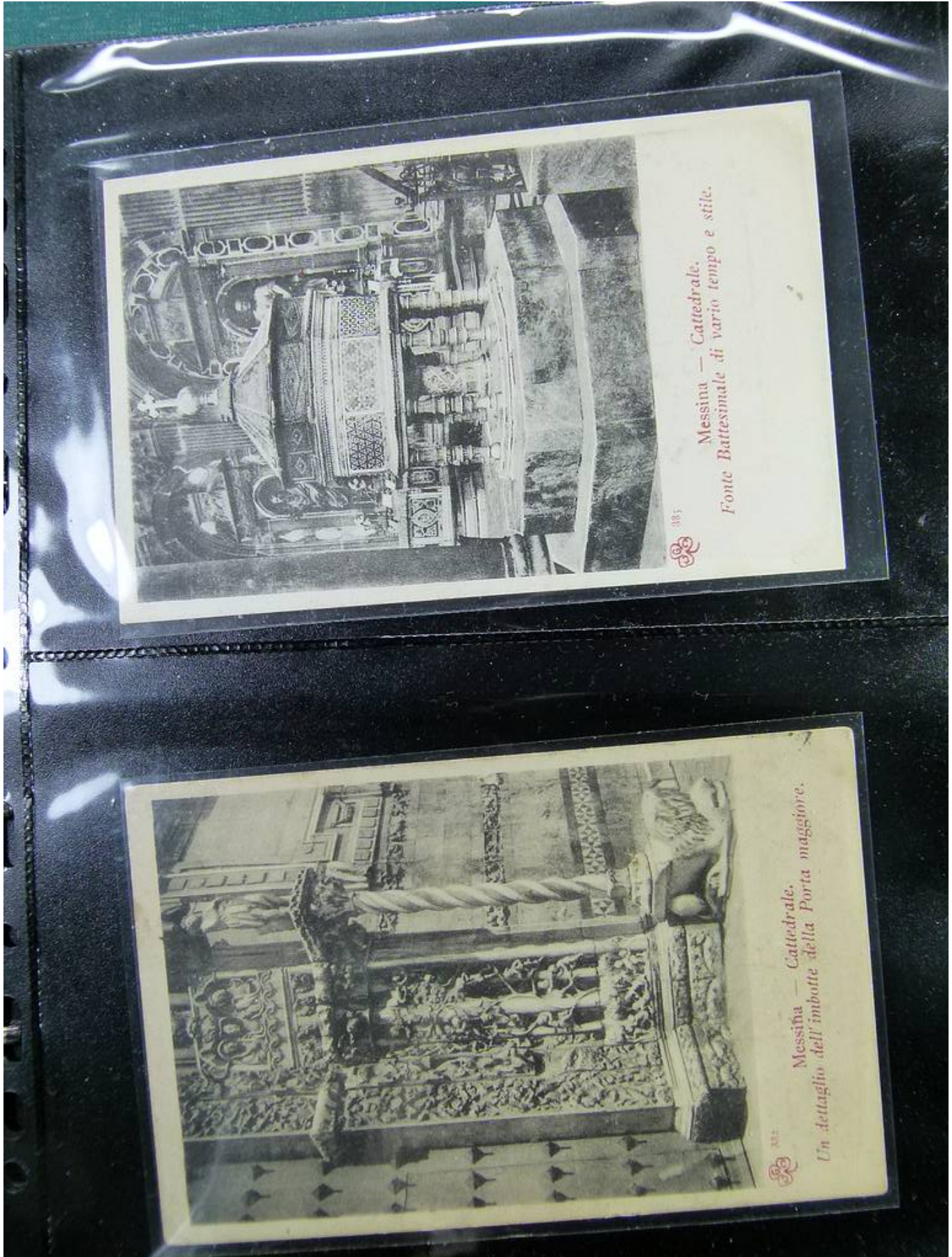


Foto nr.: 21



Foto nr.: 22

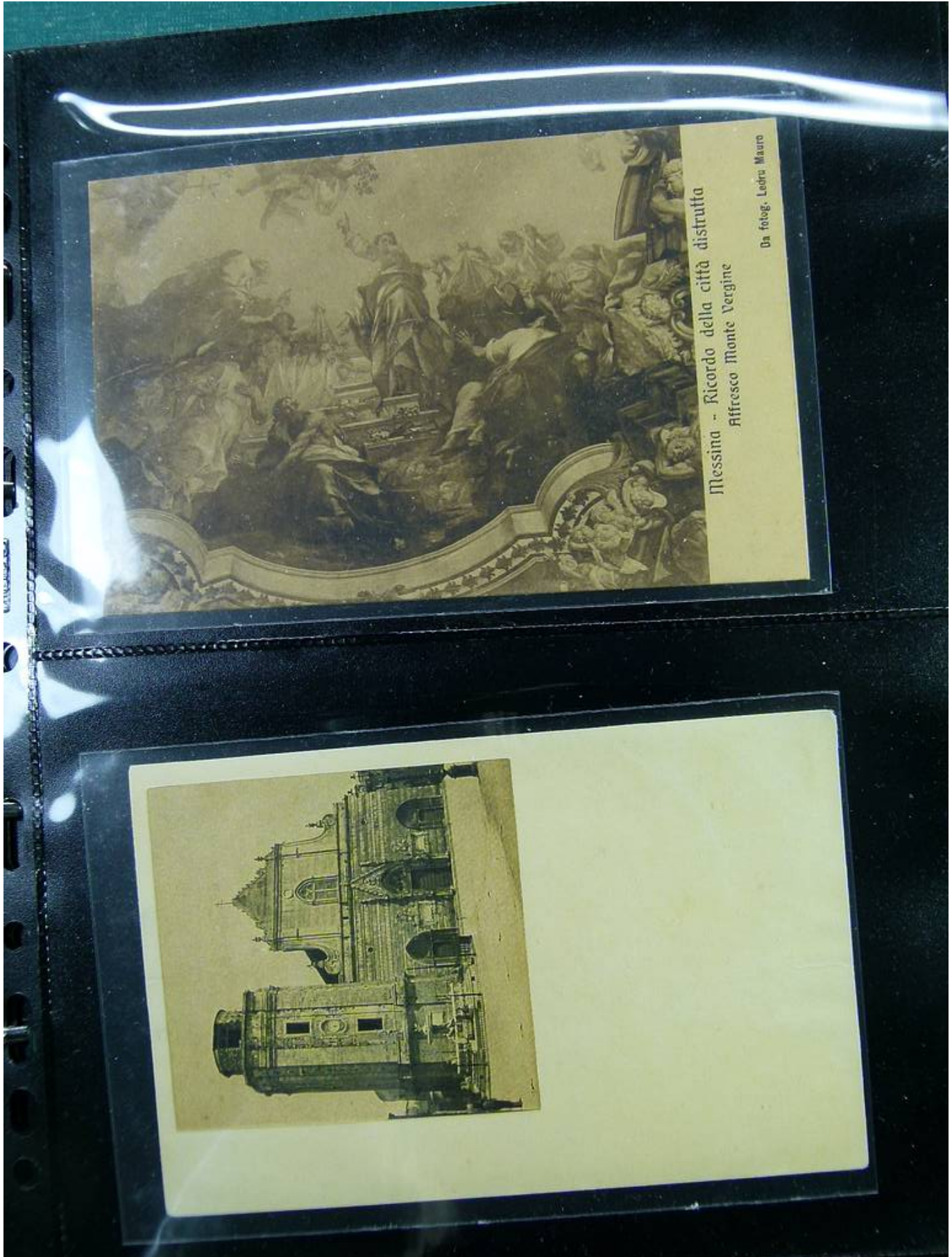


Foto nr.: 23



Messina - Ricordo della città distrutta
La Cattedrale prima dell' ultimo restauro

Da fotogr. Ledru Mauro

Messina - Ricordo della città distrutta
Cattedrale - Altar Maggiore

Foto nr.: 24



Foto nr.: 25



Foto nr.: 26



Foto nr.: 27

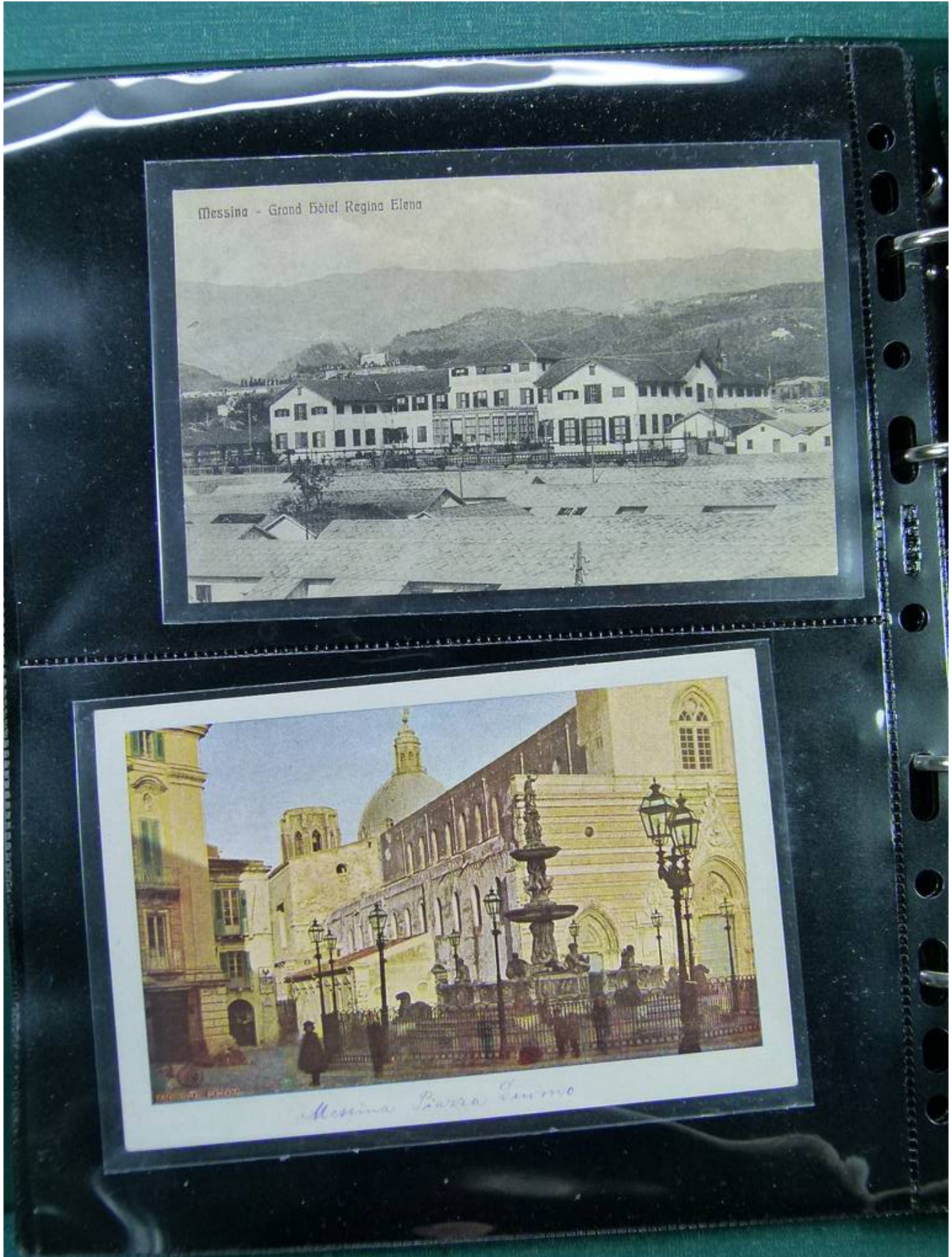


Foto nr.: 28

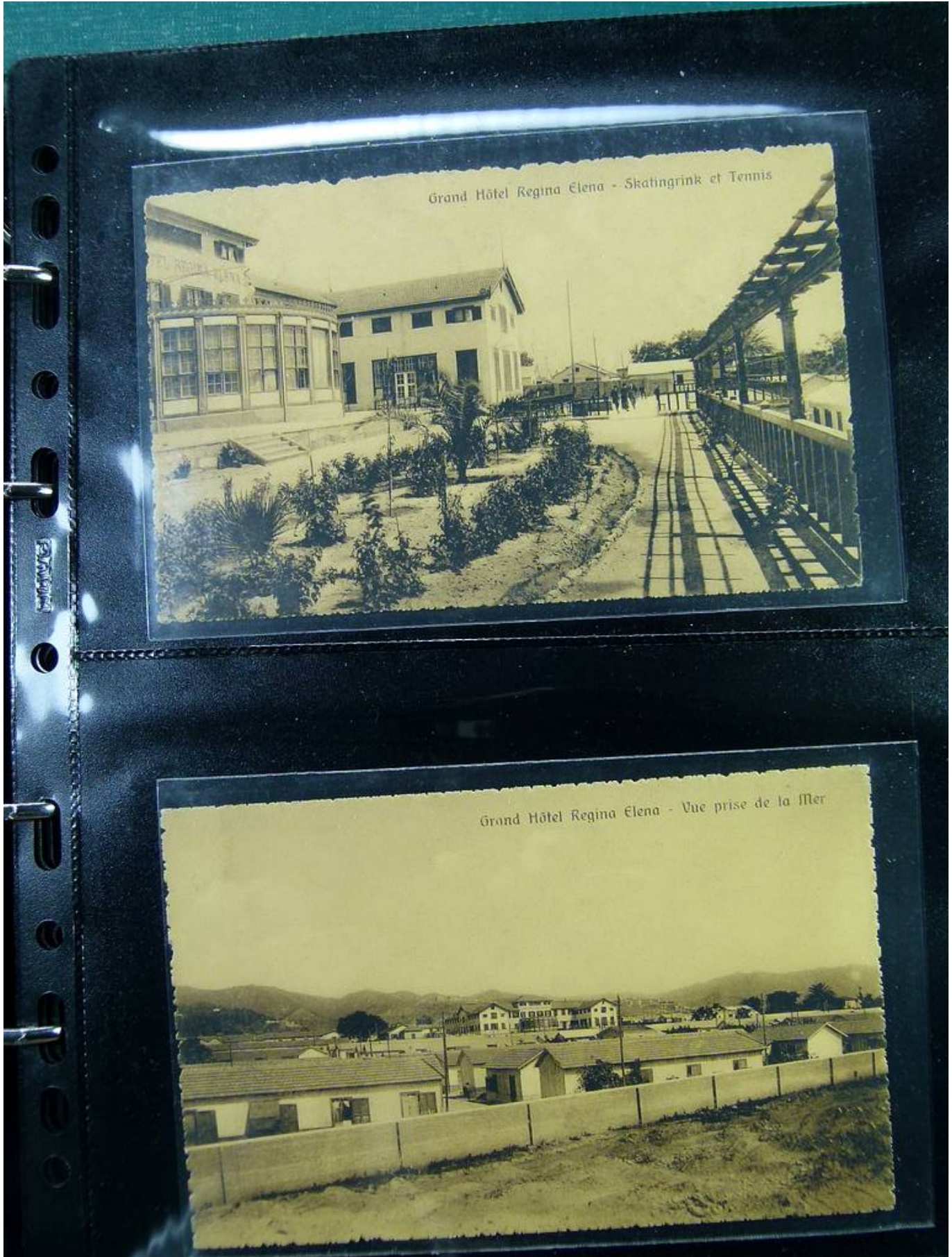


Foto nr.: 29



Foto nr.: 30



Foto nr.: 31



La nuova Messina - Grand Hôtel e Ristorante Pagliari

MESSINA prima del Terremoto e Maremoto del 28 Dicembre 1908
Corso Garibaldi e Porta Marina.



Foto nr.: 32



Foto nr.: 33

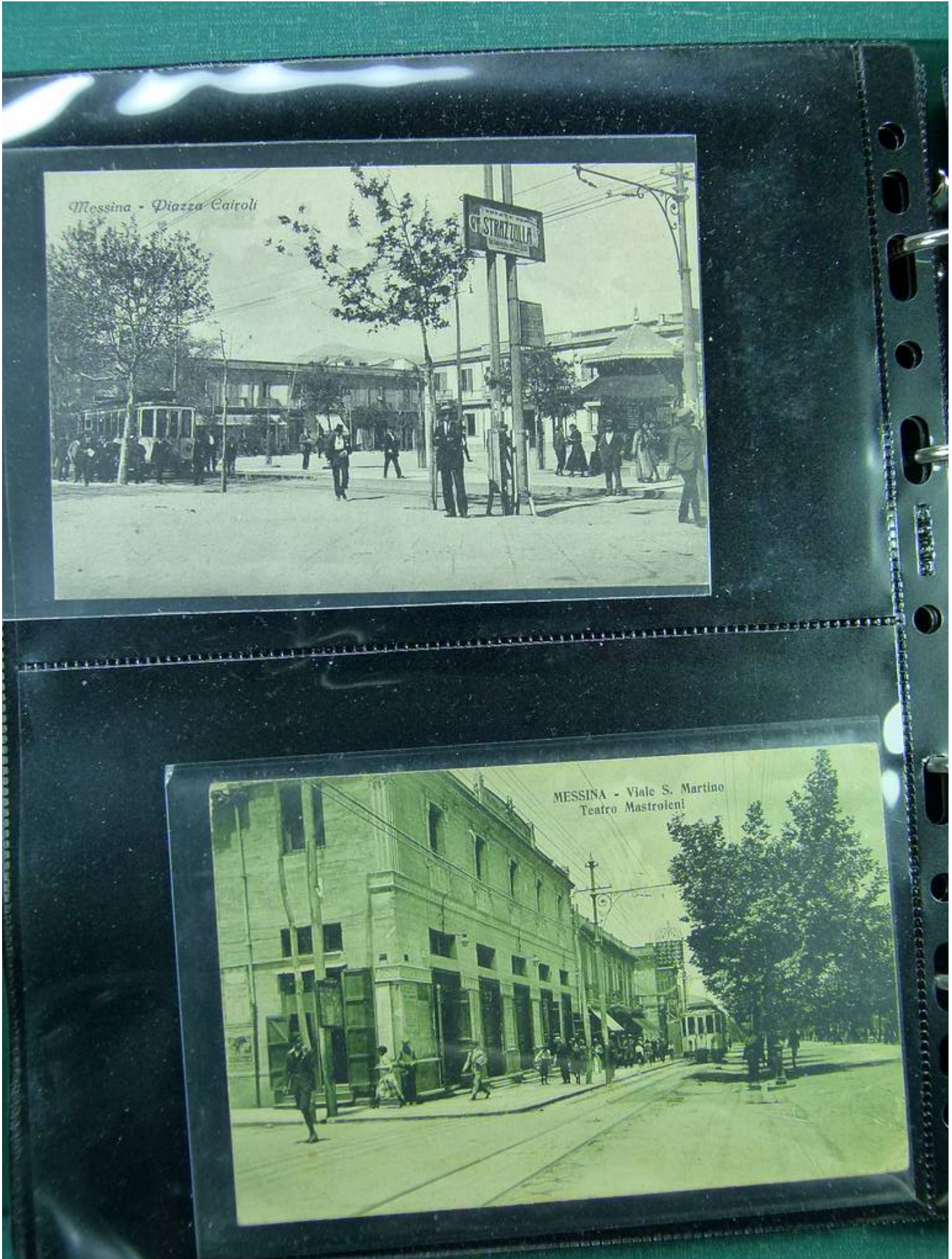


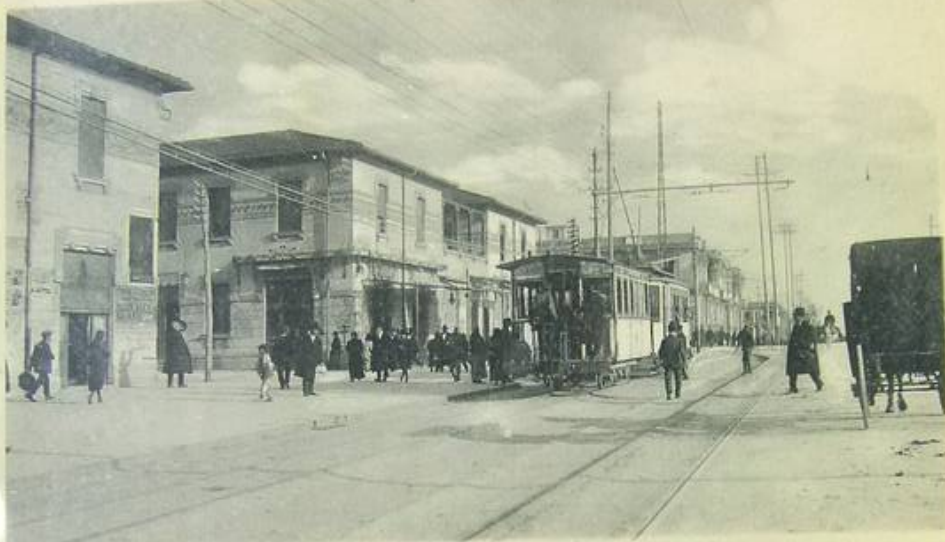
Foto nr.: 34



Foto nr.: 35



Foto nr.: 36



Messina - Viale S. Martino - Quartiere Lombardo



Messina - Viale S. Martino - Grand Hôtel

Foto nr.: 37



Foto nr.: 38



Foto nr.: 39



Foto nr.: 40



Foto nr.: 41

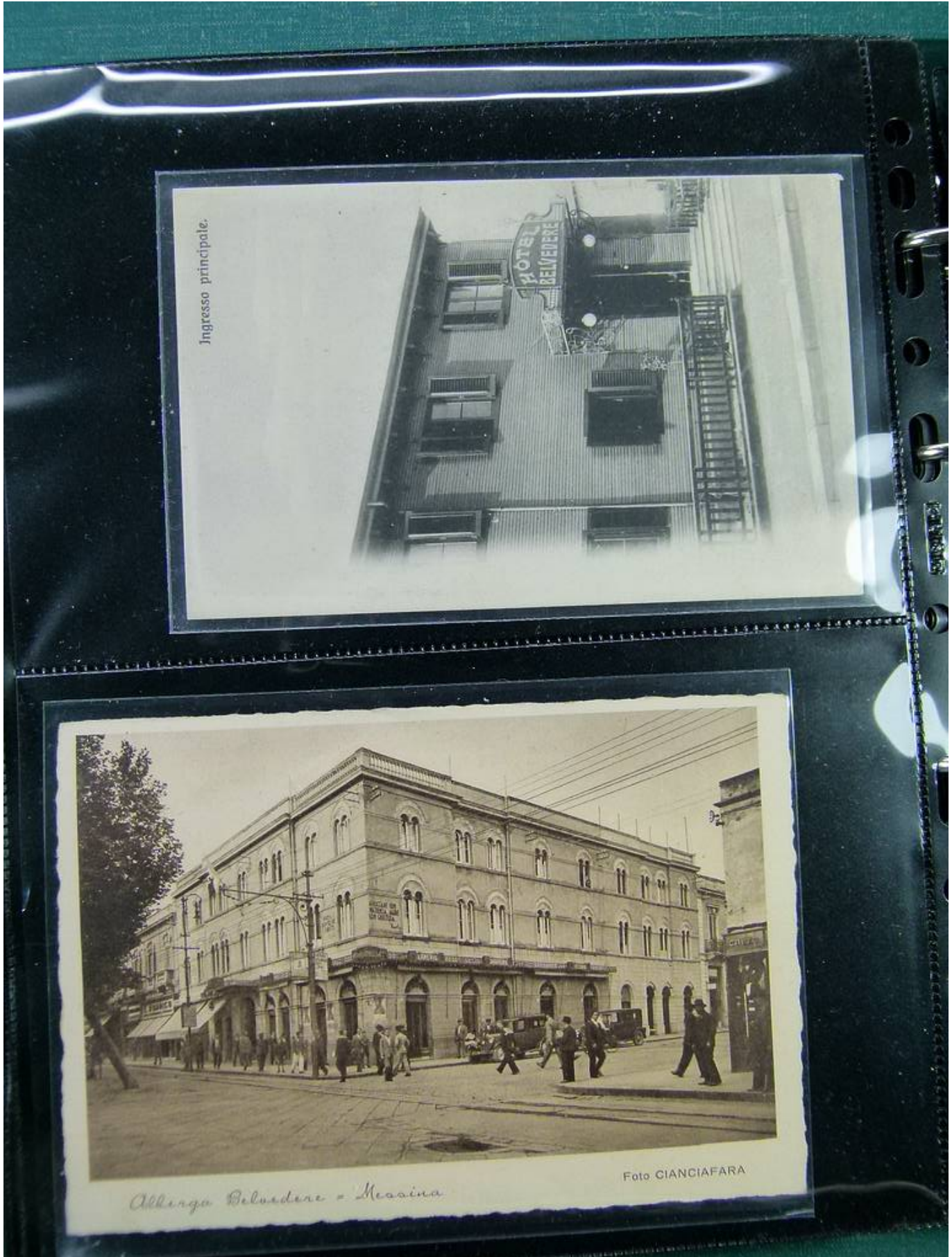


Foto nr.: 42



Foto nr.: 43



Foto nr.: 44



Foto nr.: 45



Foto nr.: 46



Foto nr.: 47

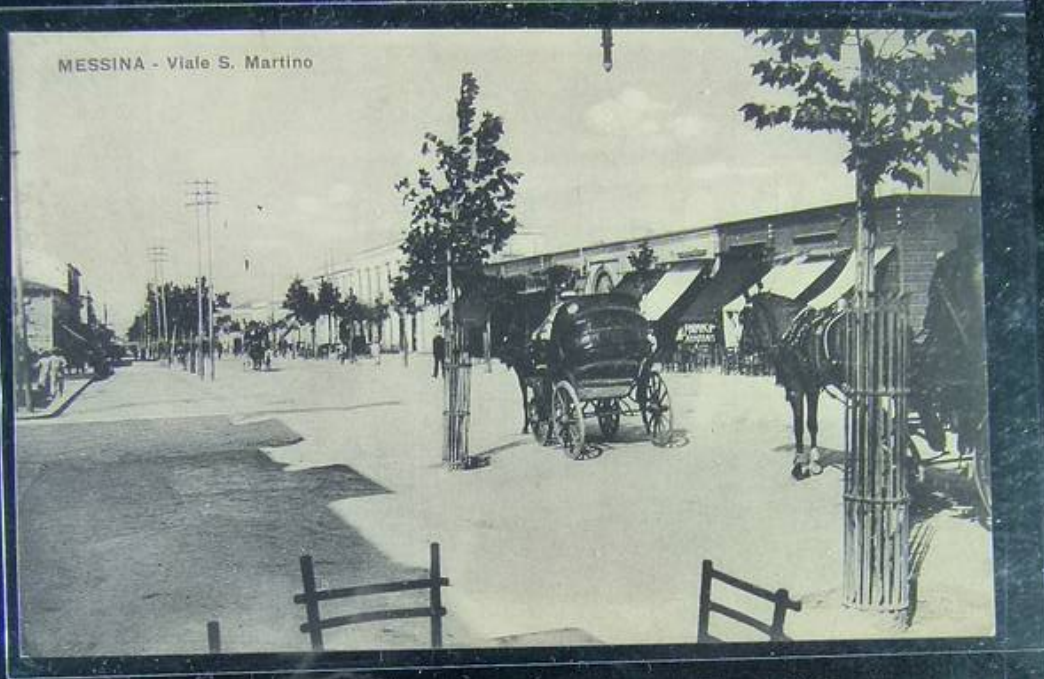


Foto nr.: 48



Foto nr.: 49



Foto nr.: 50



Foto nr.: 51



Foto nr.: 52



Foto nr.: 53



Foto nr.: 54



Teatro Vittorio Emanuele II - Messina

Dalla Casa BIDERI a ricordo dell'alba funesta, 28 Dicembre 1908 e per il piccolo obolo



Messina - Ospedale Civico e via Porta Imperiale

Foto nr.: 55



Foto nr.: 56



Foto nr.: 57



Foto nr.: 58



Foto nr.: 59

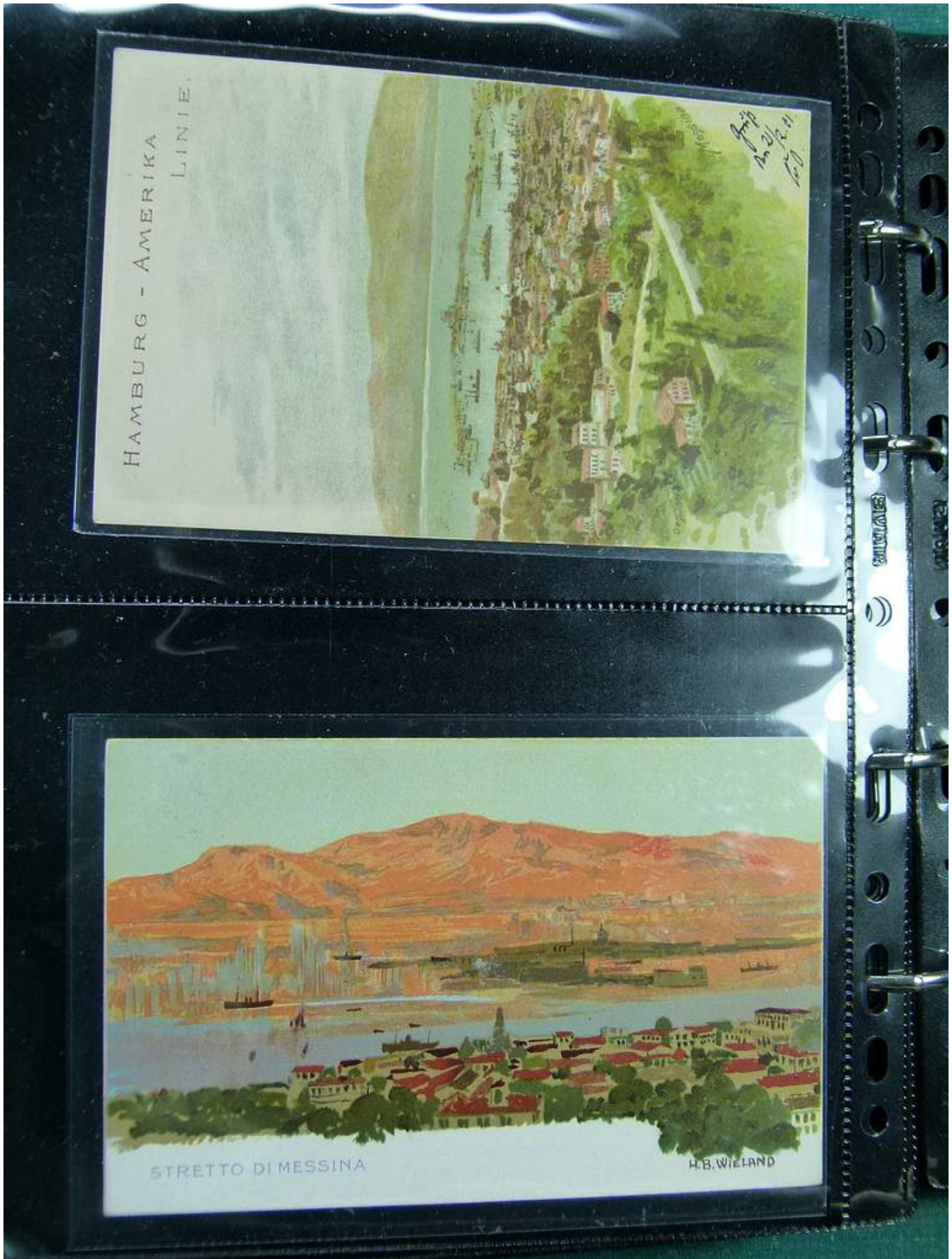


Foto nr.: 60



Foto nr.: 61



Foto nr.: 62



MESSINA - Edificio delle Scuole Comunali di Porta Imperiale

Il complesso delle scuole comunali "T. Cannizzaro" e "Galatti" pressoché ultimato. La sede della via Porta Imperiale è ancora in parte occupata da baracche



MESSINA - Panorama

Foto nr.: 63



Foto nr.: 64



Foto nr.: 65

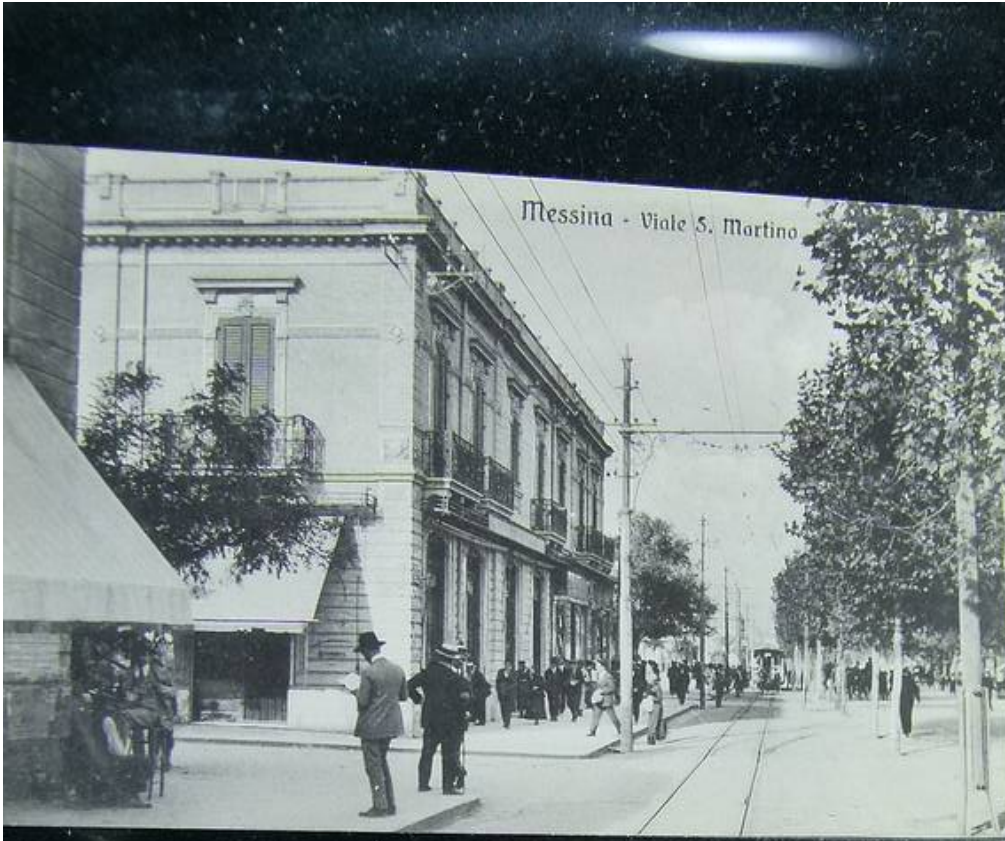


Foto nr.: 66



Foto nr.: 67

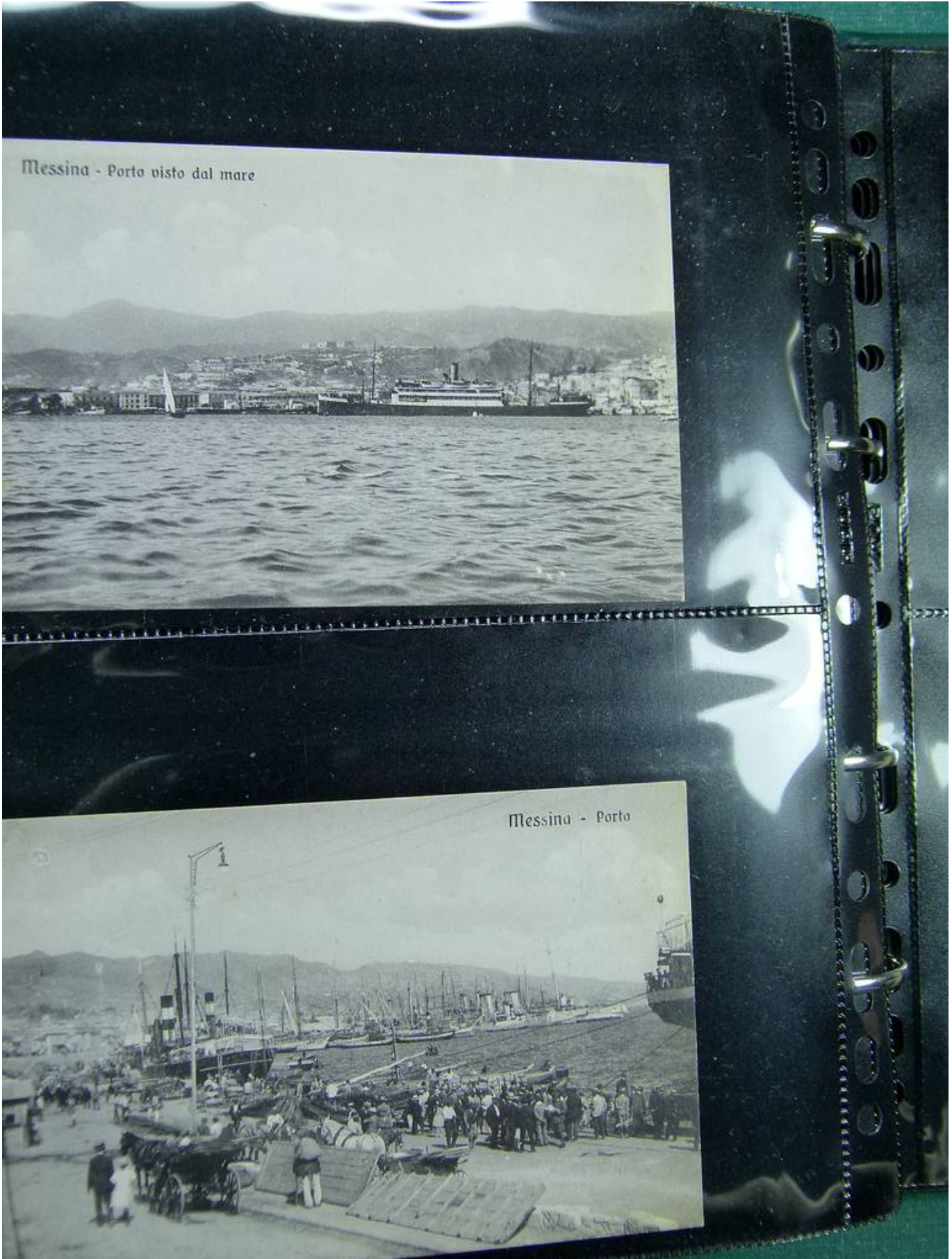


Foto nr.: 68



Foto nr.: 69

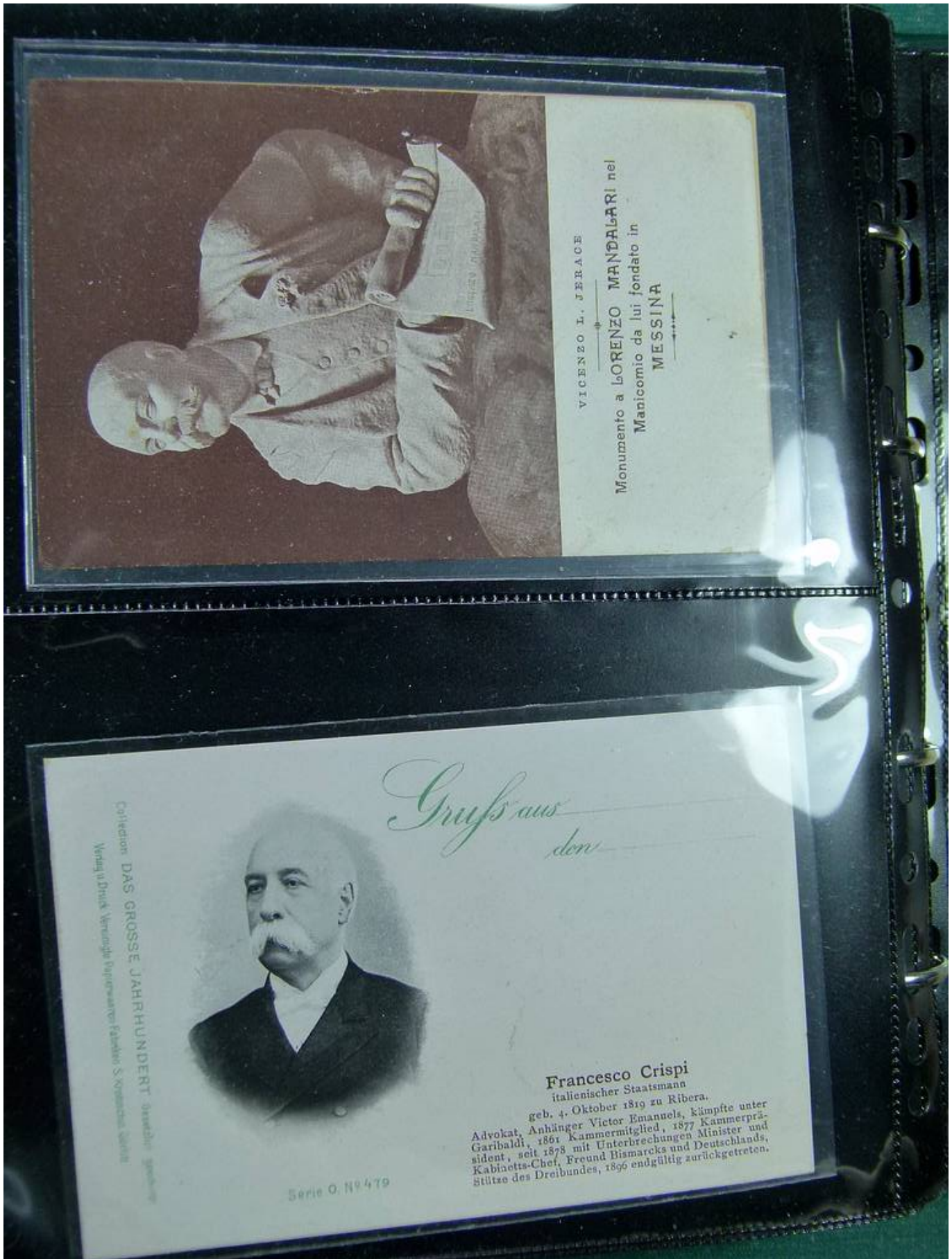


Foto nr.: 70



Foto nr.: 71



Foto nr.: 72



Foto nr.: 73



Foto nr.: 74



Foto nr.: 75



Foto nr.: 76



Foto nr.: 77



Foto nr.: 78

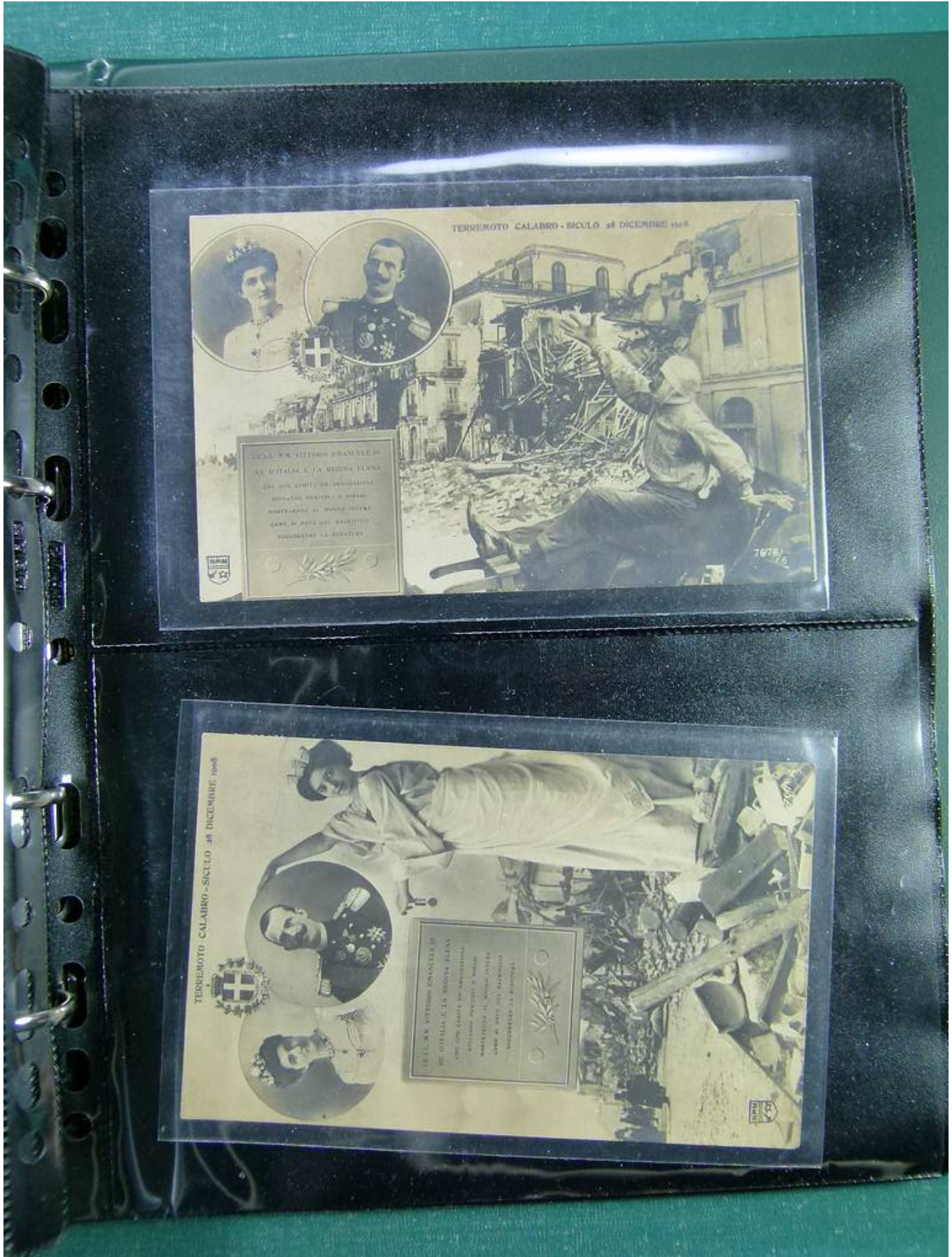


Foto nr.: 79



Foto nr.: 80

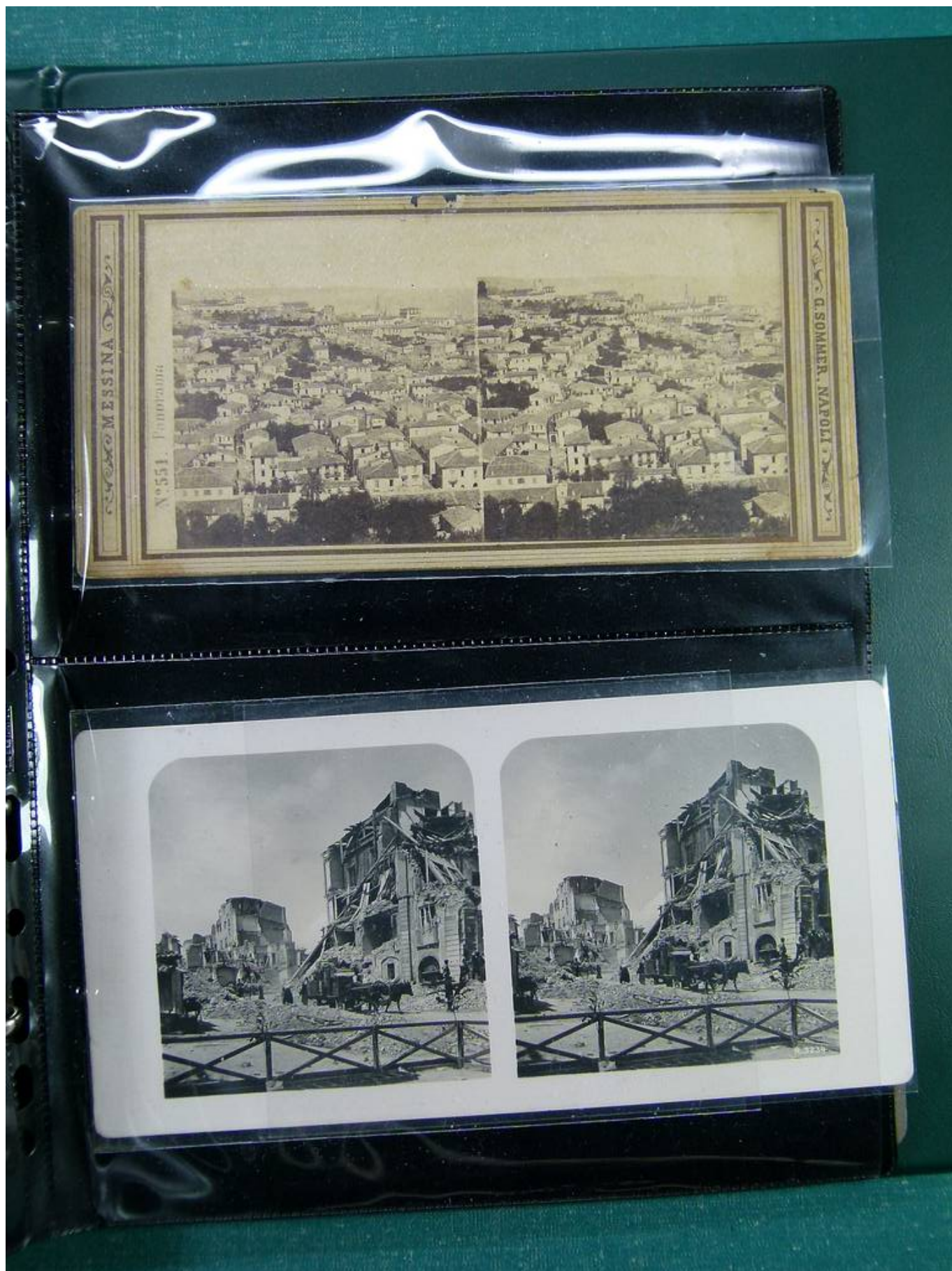


Foto nr.: 81

