



Lot nr.: L244412

Country/Type: Europe

Messina Collection, with 160 vintage postcards, from the end of the 19th century to the 1920s, traveled and untraveled, animated.

Price: 550 eur

[[Go to the lot on www.sevenstamps.com](http://www.sevenstamps.com)]

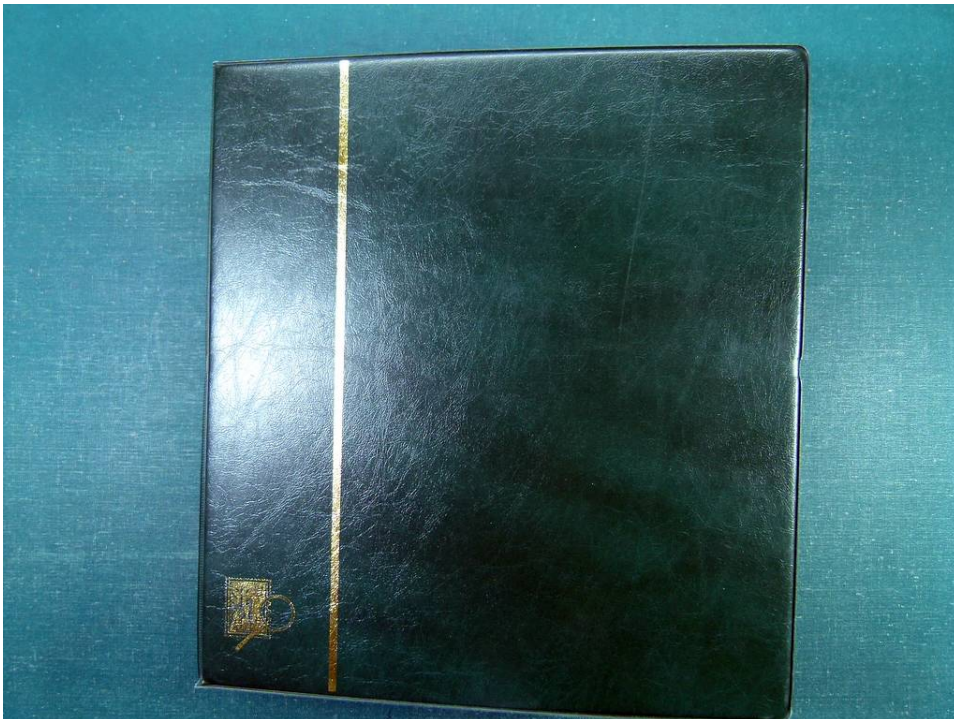




Foto nr.: 2





Foto nr.: 3





Foto nr.: 4





Foto nr.: 5

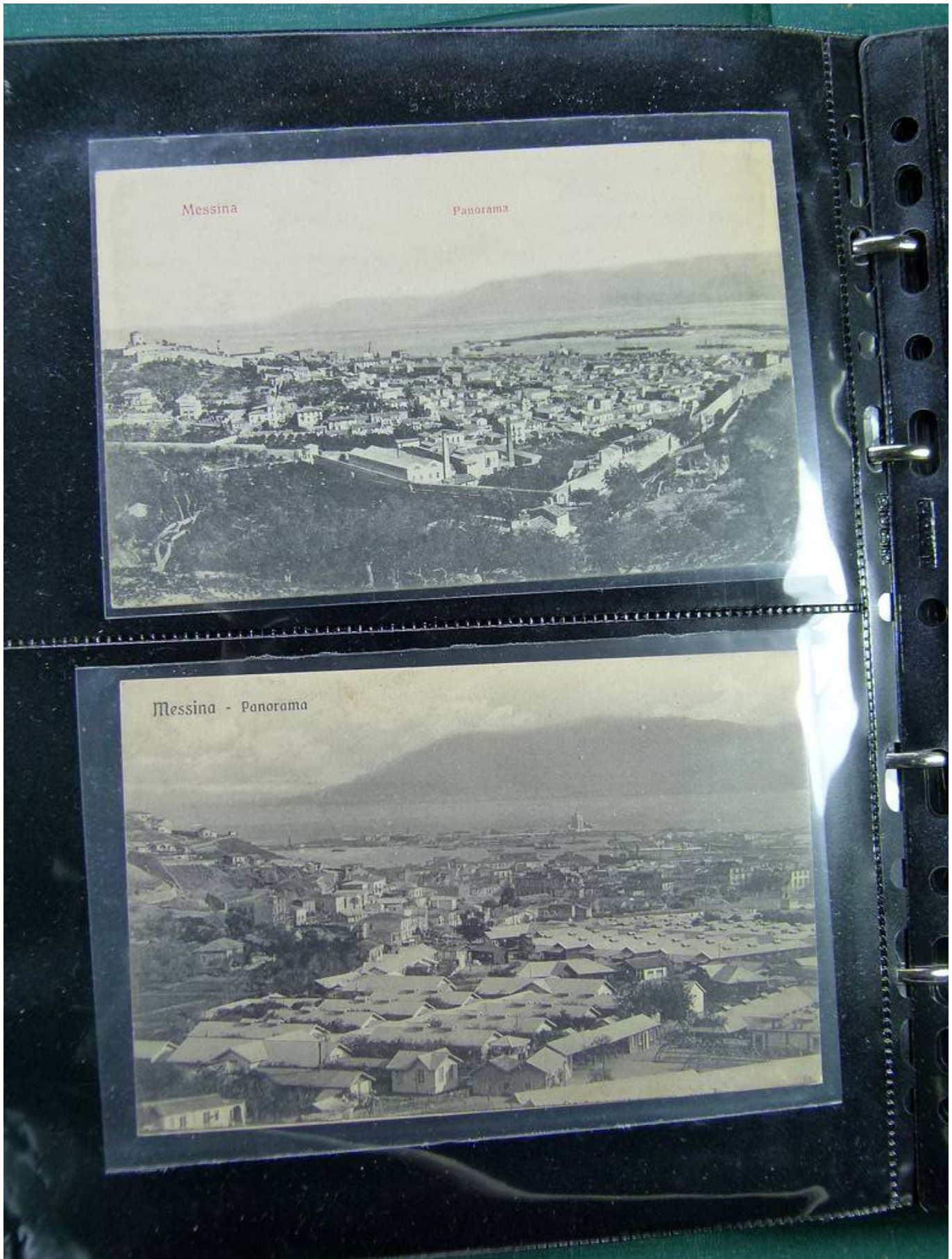




Foto nr.: 6

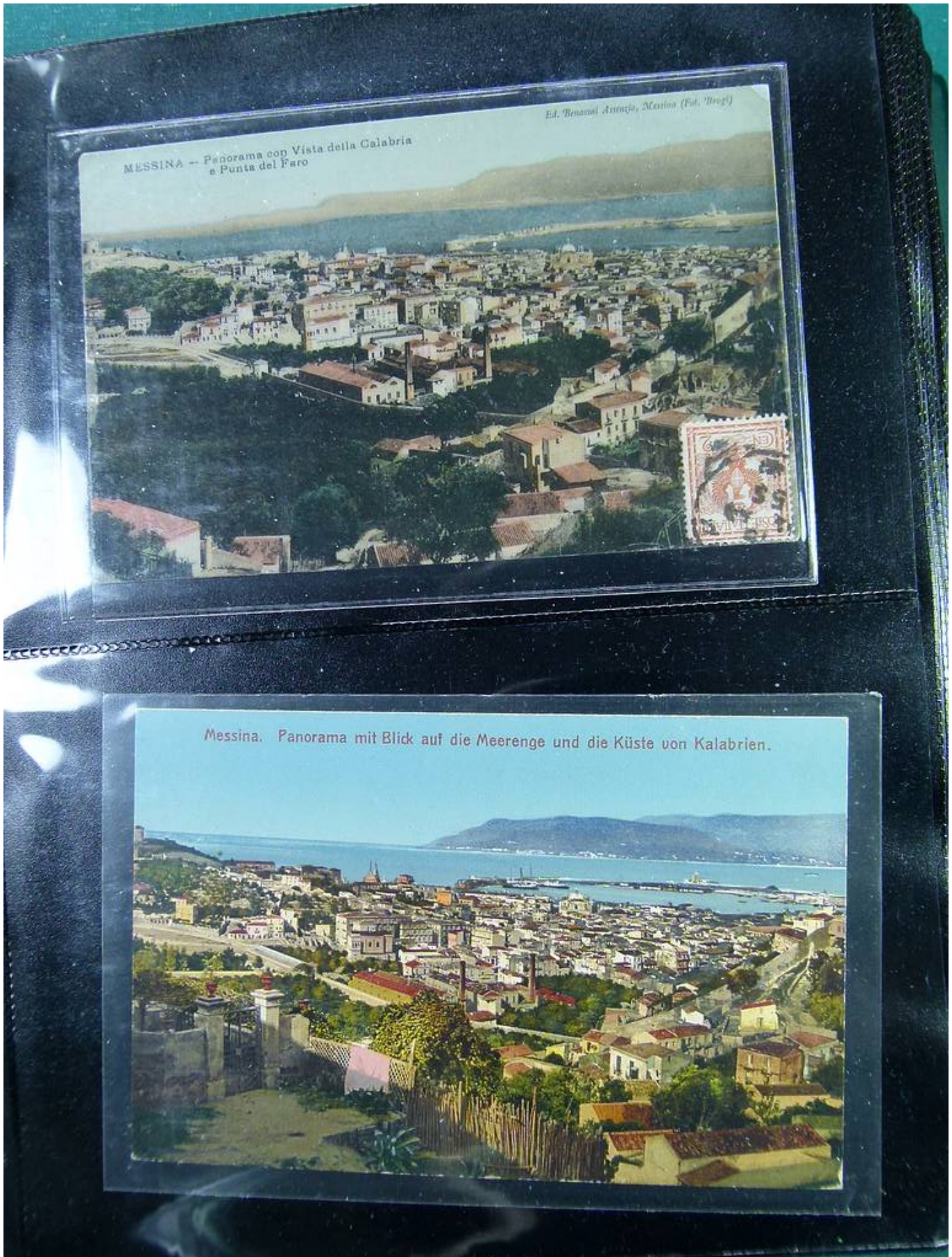




Foto nr.: 7





Foto nr.: 8





Foto nr.: 9





Foto nr.: 10



MESSINA - Duomo - Secolo IV



MESSINA - Duomo - Portale principale e porte Gotiche



Foto nr.: 11

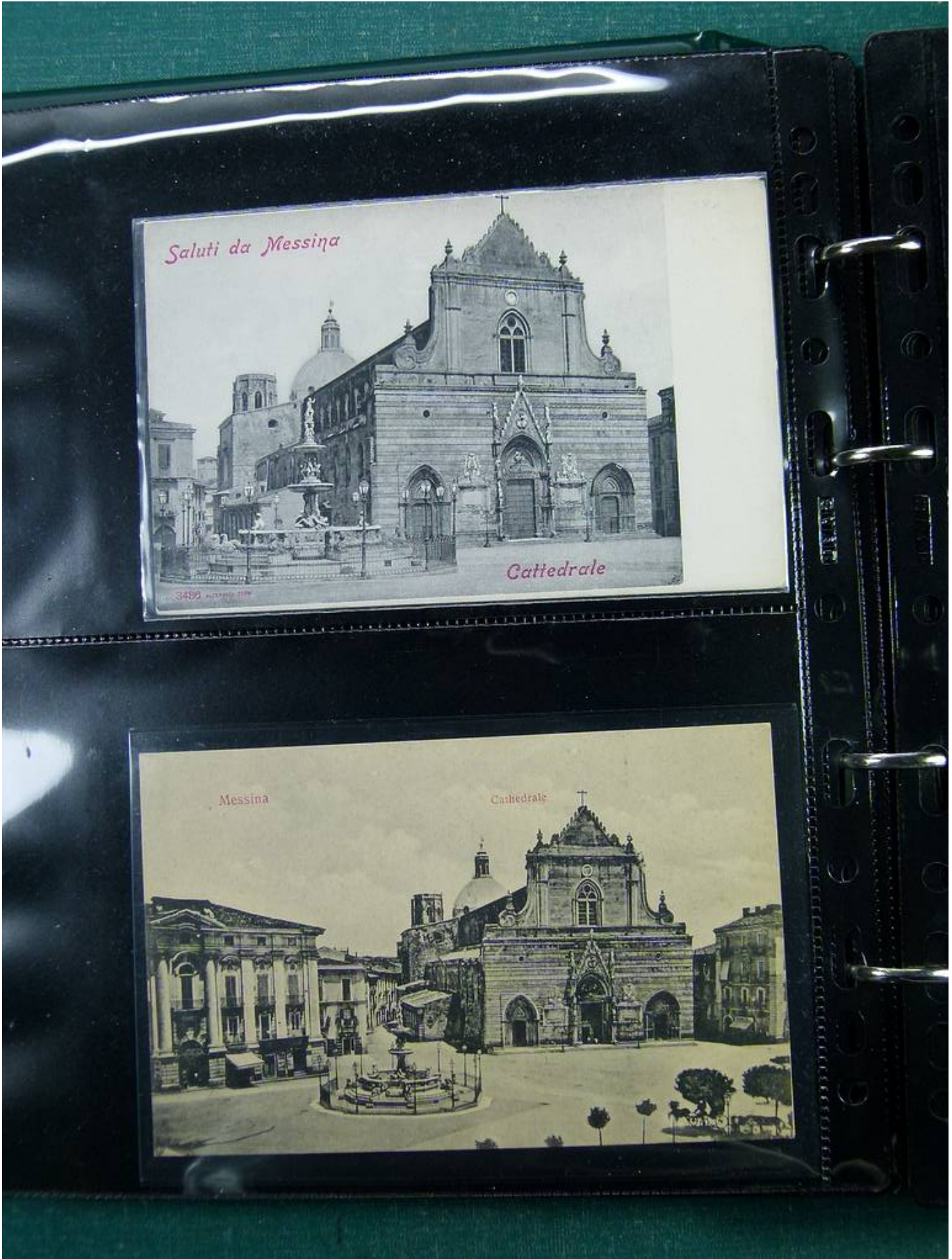




Foto nr.: 12





Foto nr.: 13

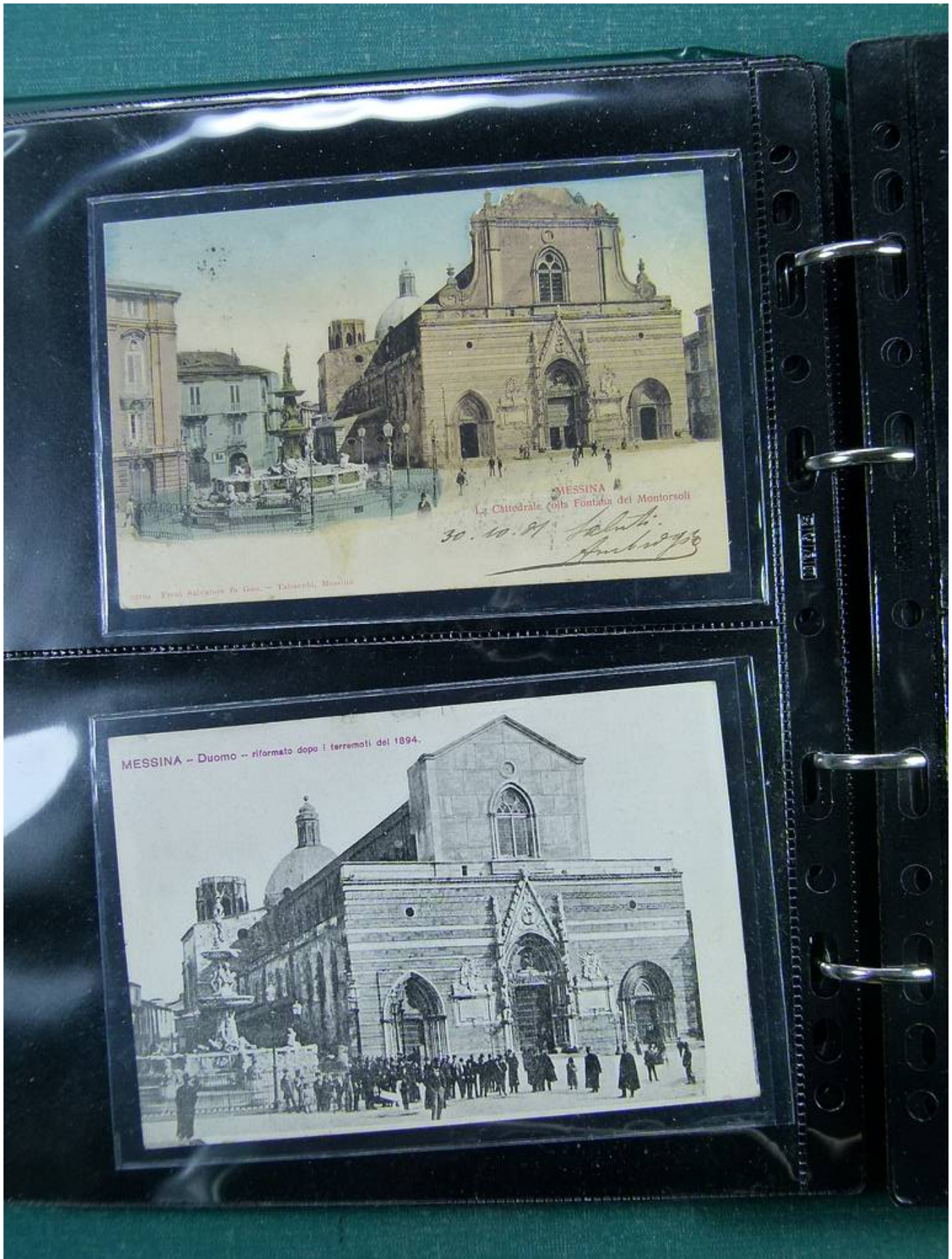




Foto nr.: 14

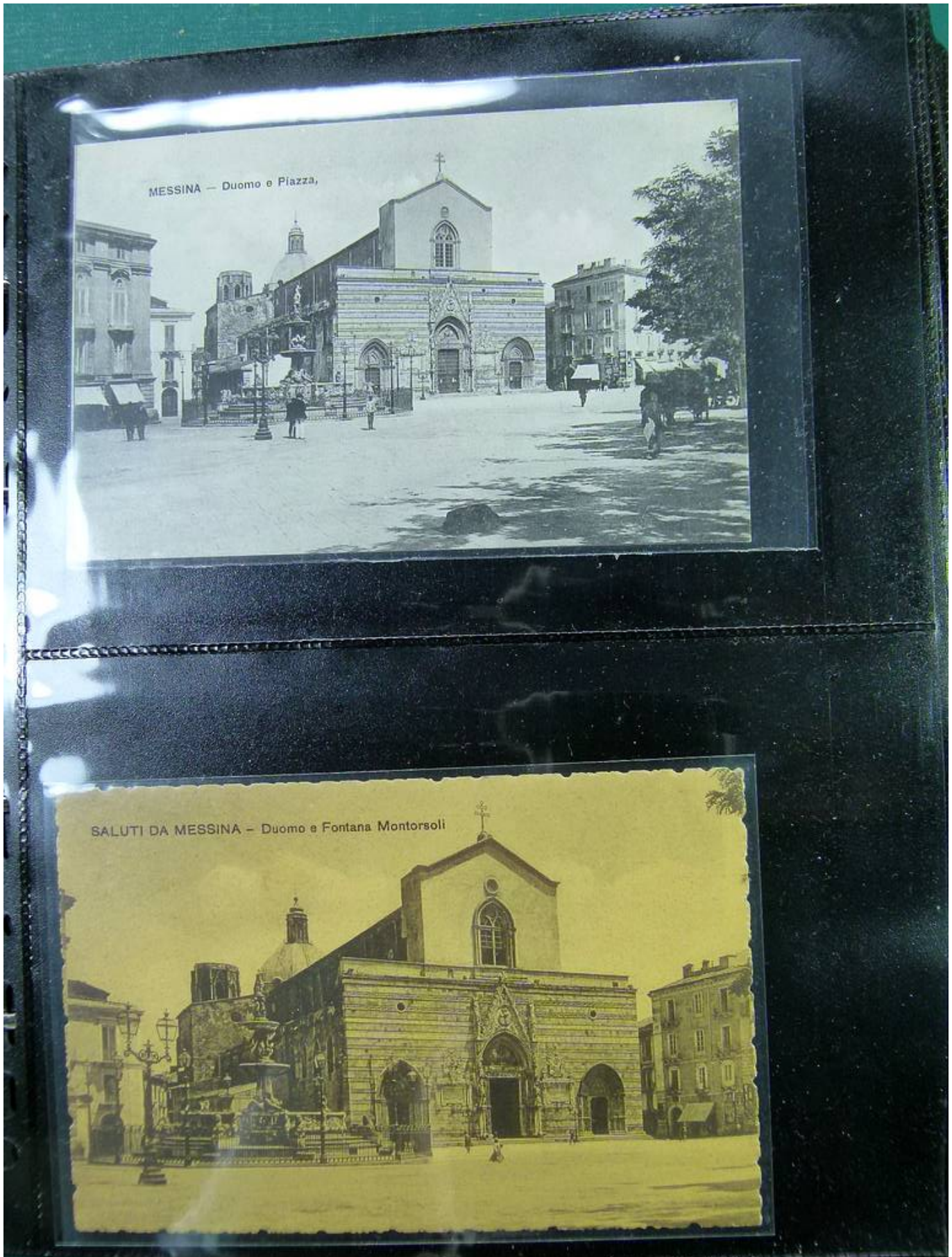
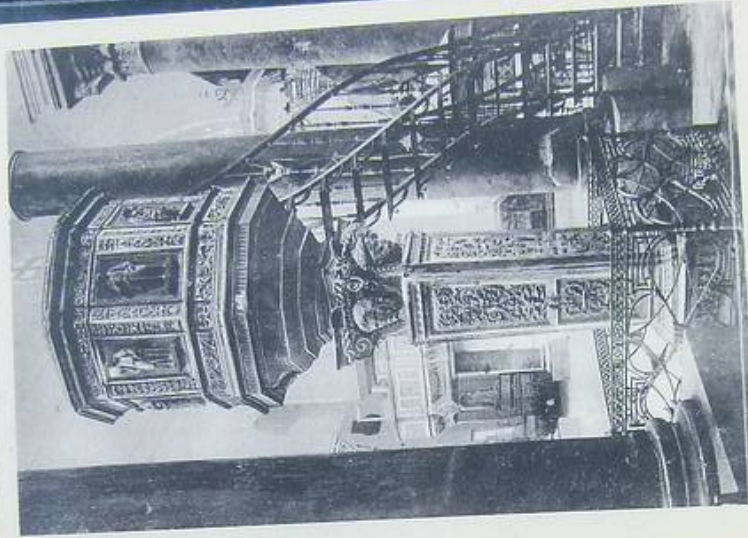




Foto nr.: 15



MESSINA - Cattedrale - Pulpito del Calamech (1851)



MESSINA prima del Terremoto e Maremoto del 28 Dicembre 1908
Piazza del Duomo



Foto nr.: 16





Foto nr.: 17





Foto nr.: 18

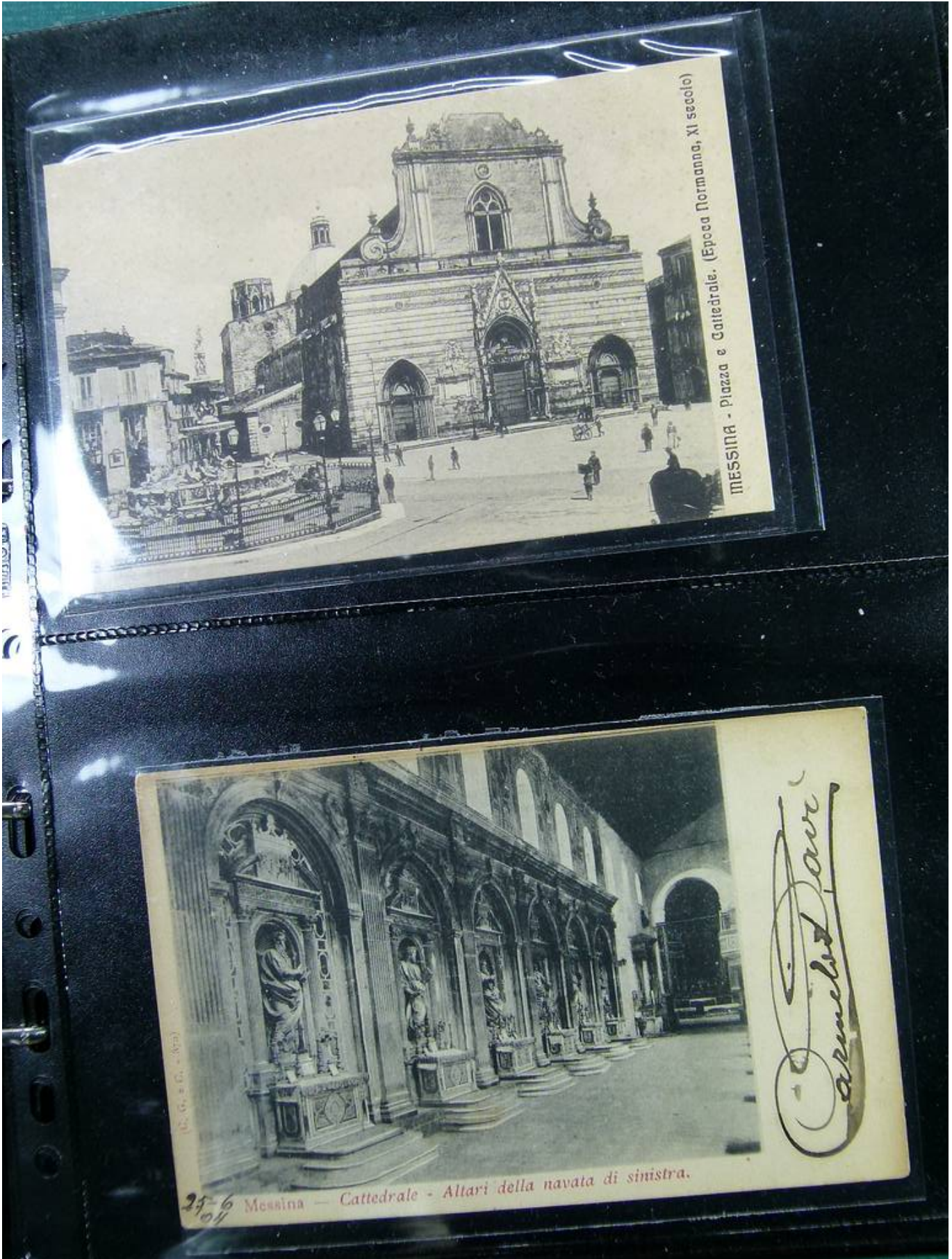


Foto nr.: 19

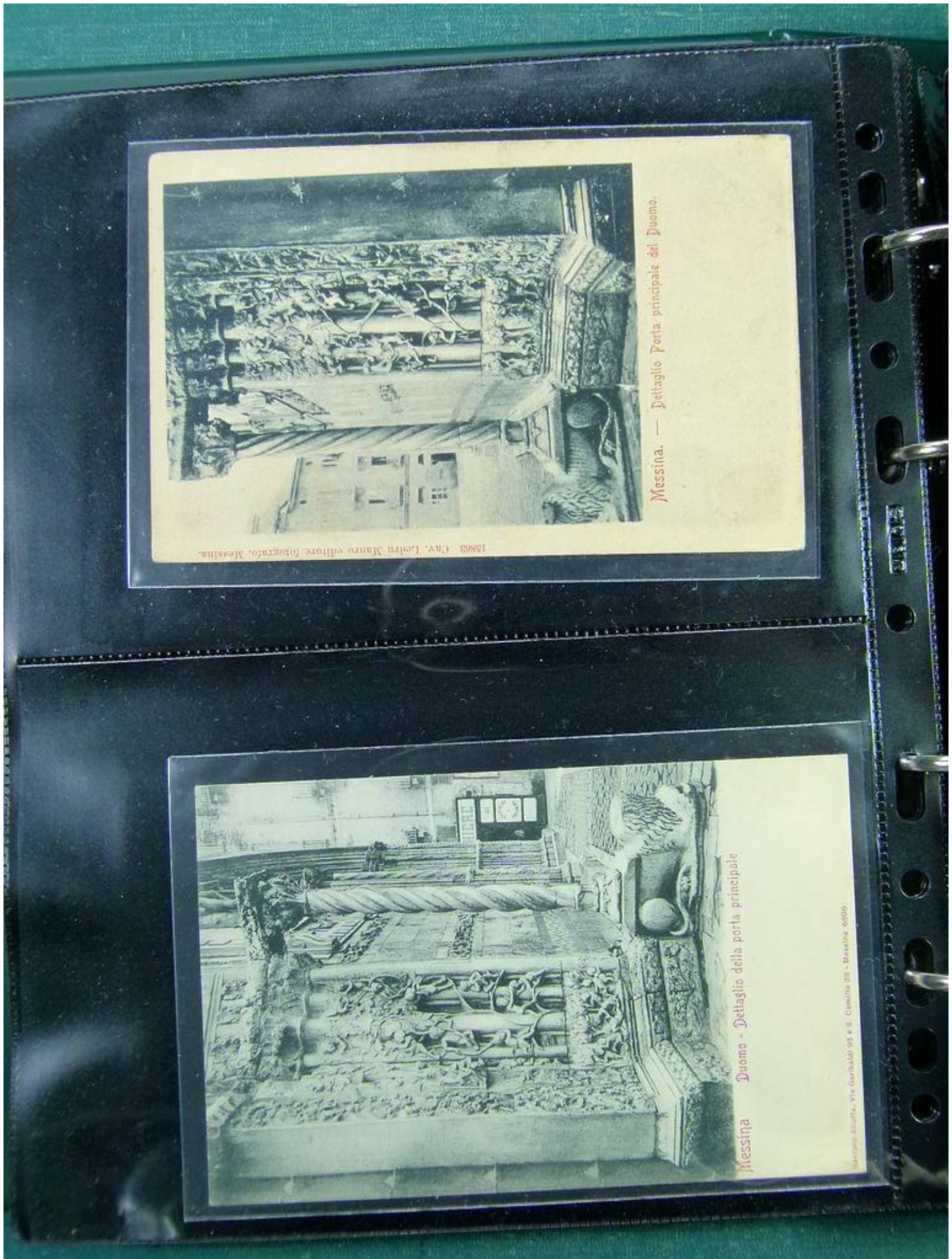




Foto nr.: 20





Foto nr.: 21





Foto nr.: 22

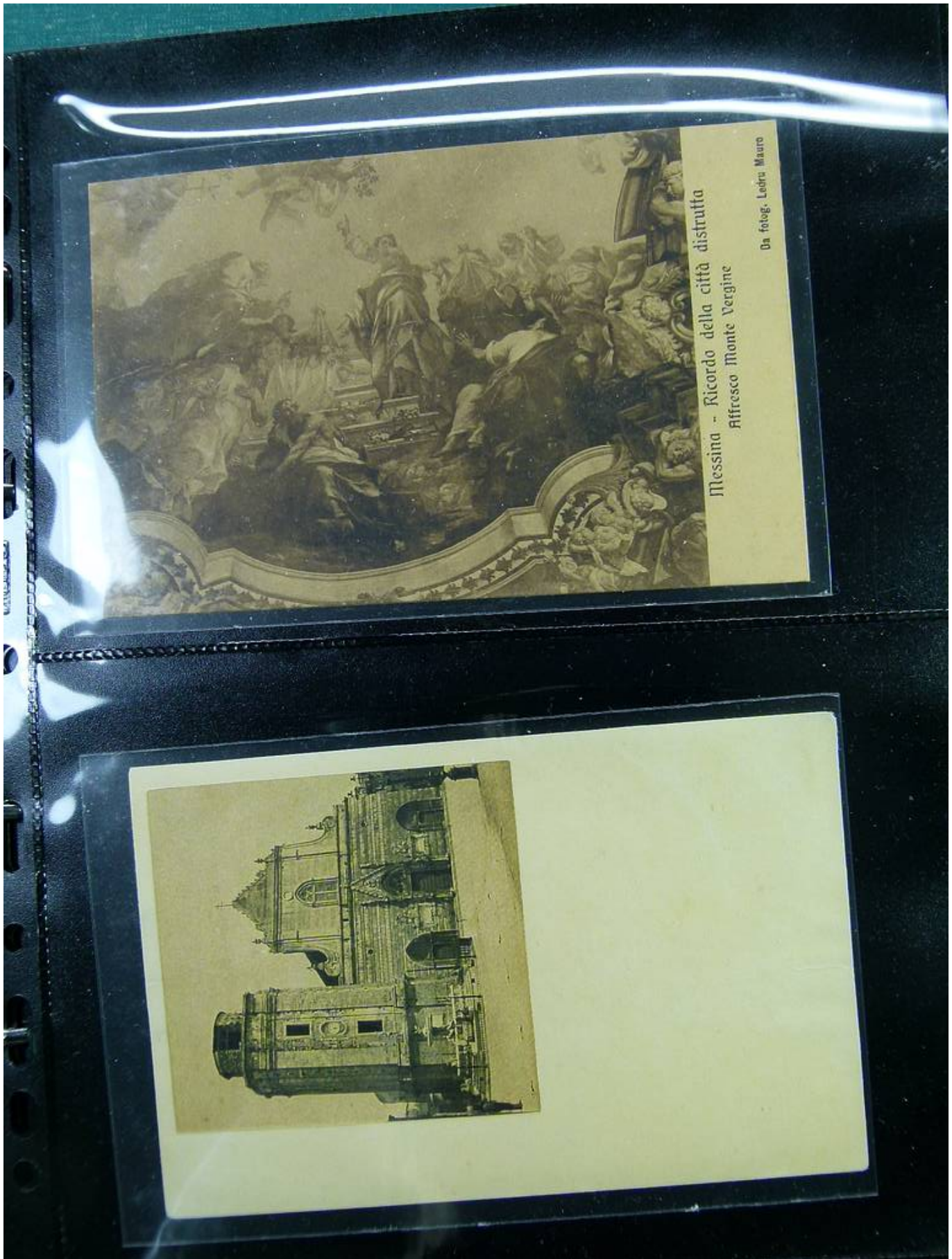




Foto nr.: 23



Foto nr.: 24





Foto nr.: 25





Foto nr.: 26





Foto nr.: 27





Foto nr.: 28





Foto nr.: 29





Foto nr.: 30





Foto nr.: 31



La nuova Messina - Grand Hôtel e Ristorante Pagliari

MESSINA prima del Terremoto e Maremoto del 28 Dicembre 1908
Corso Garibaldi e Porta Marina.





Foto nr.: 32





Foto nr.: 33

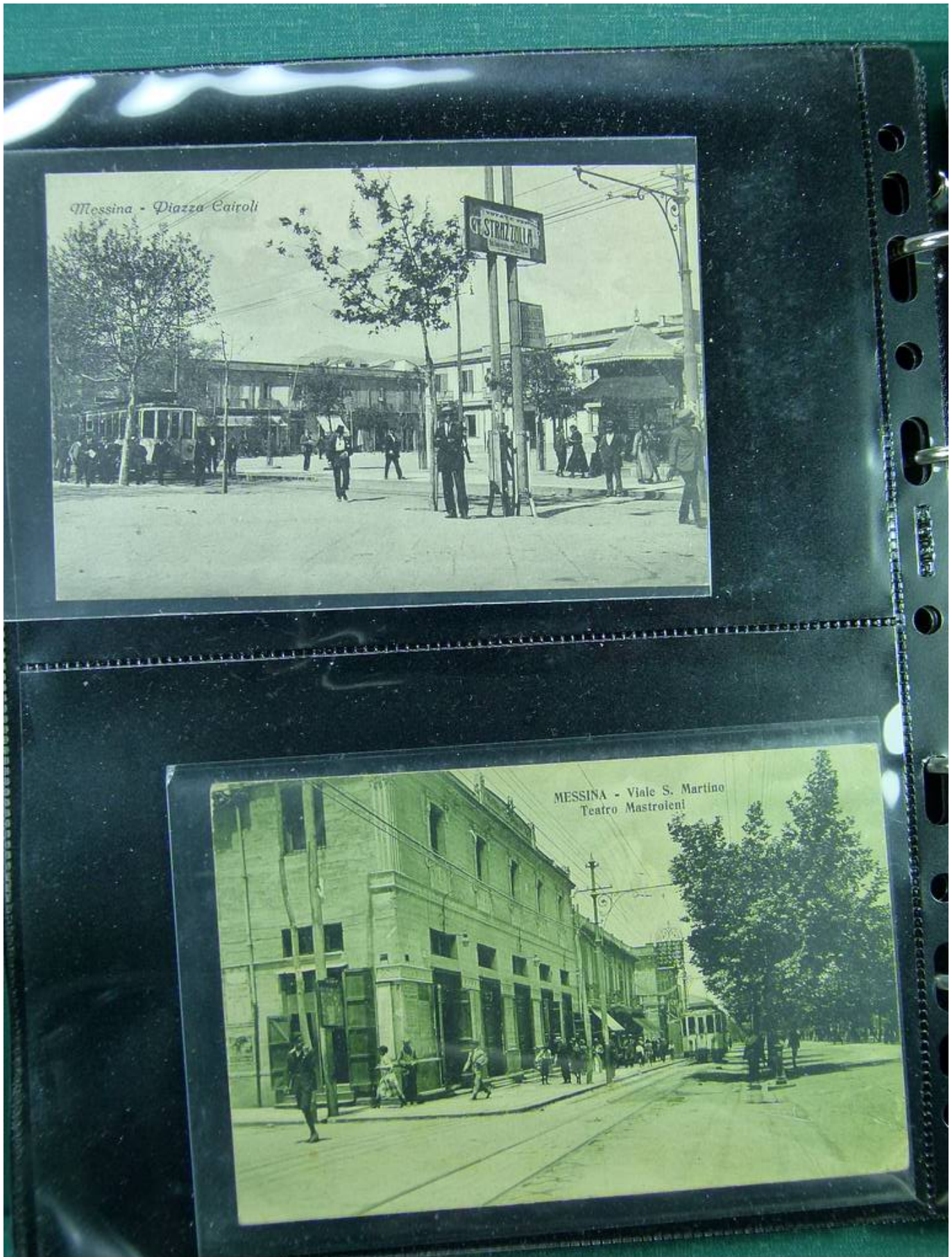




Foto nr.: 34





Foto nr.: 35





Foto nr.: 36



Messina - Viale S. Martino - Quartiere Lombardo



Messina - Viale S. Martino - Grand Hôtel



Foto nr.: 37





Foto nr.: 38

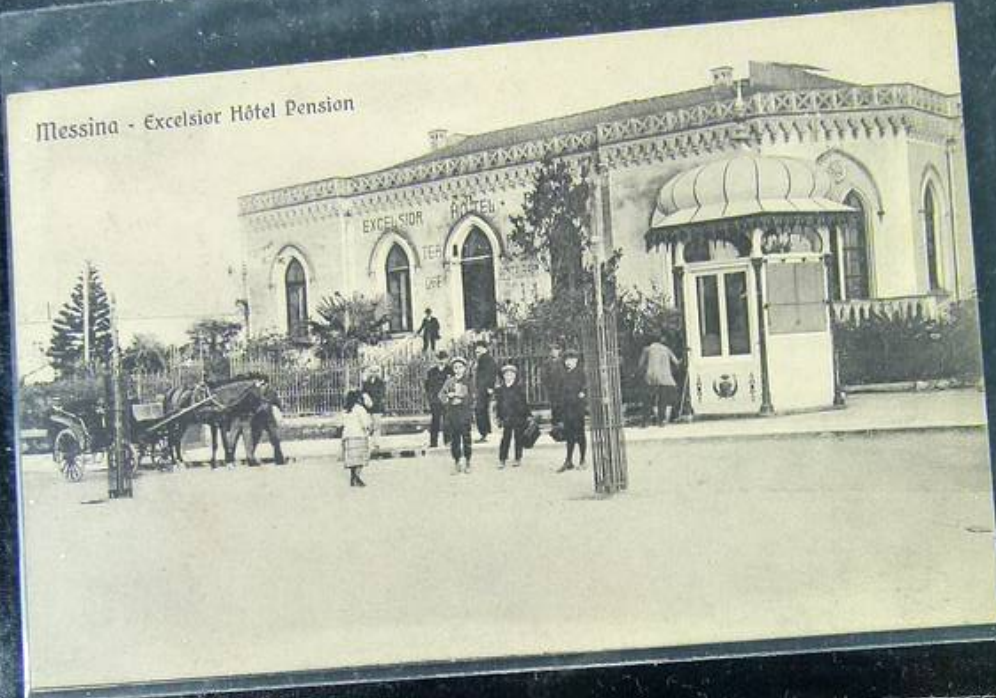




Foto nr.: 39





Foto nr.: 40

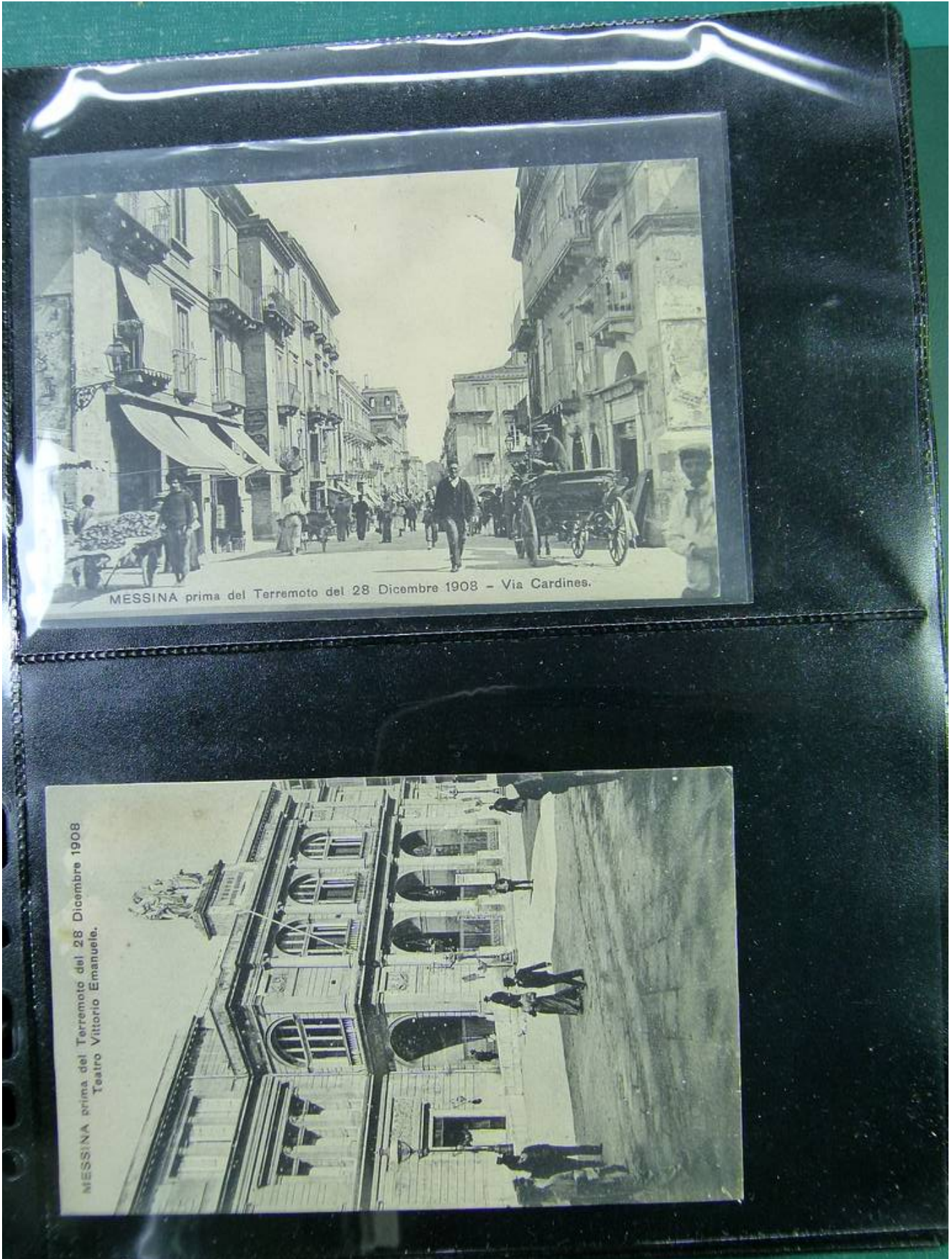
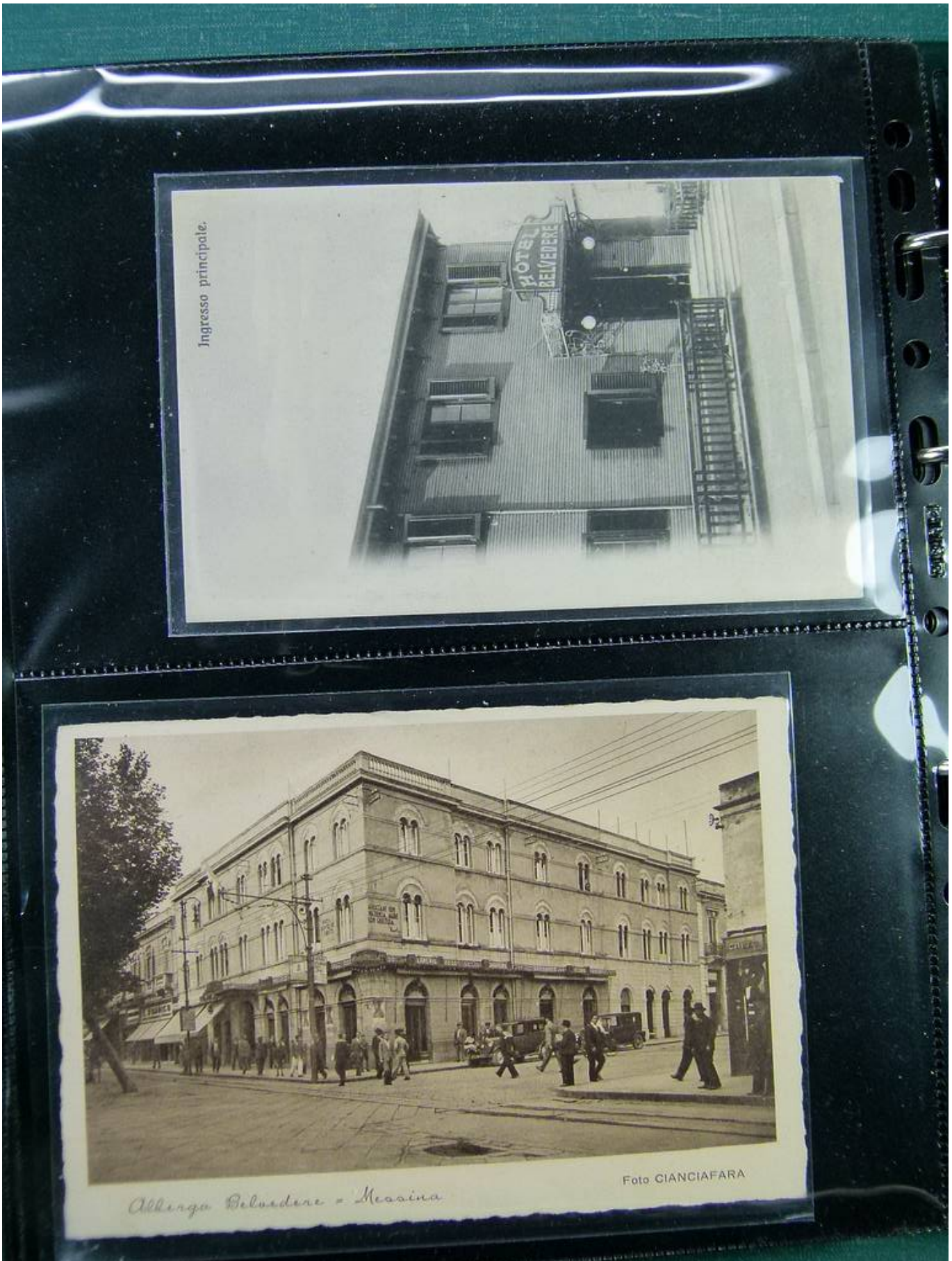




Foto nr.: 41



Albergo Belvedere - Messina



Foto nr.: 42





Foto nr.: 43





Foto nr.: 44



Messina - Viale S. Martino - Palazzine Baistrocchi - Marangolo



MESSINA -- Viale S. Martino, Grande Sala Parisenne



Foto nr.: 45





Foto nr.: 46





Foto nr.: 47

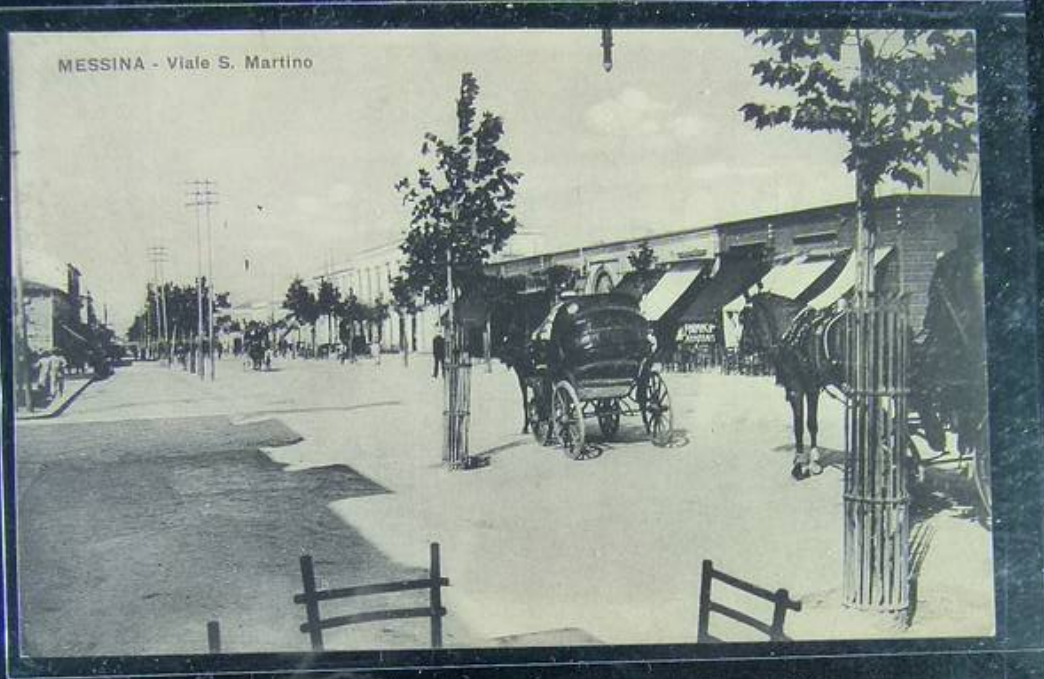




Foto nr.: 48





Foto nr.: 49





Foto nr.: 50





Foto nr.: 51





Foto nr.: 52





Foto nr.: 53





Foto nr.: 54



Teatro Vittorio Emanuele II - Messina

Dalla Casa BIDERI a ricordo dell'alba funesta, 28 Dicembre 1908 e per il piccolo obolo



Messina - Ospedale Civico e via Porta Imperiale



Foto nr.: 55





Foto nr.: 56





Foto nr.: 57



(Ed. Alinari) N. 19744. MESSINA - Panorama della Città, con veduta del Porto.



(Ed. Alinari) N. 19745. MESSINA - Panorama della Città.



Foto nr.: 58





Foto nr.: 59

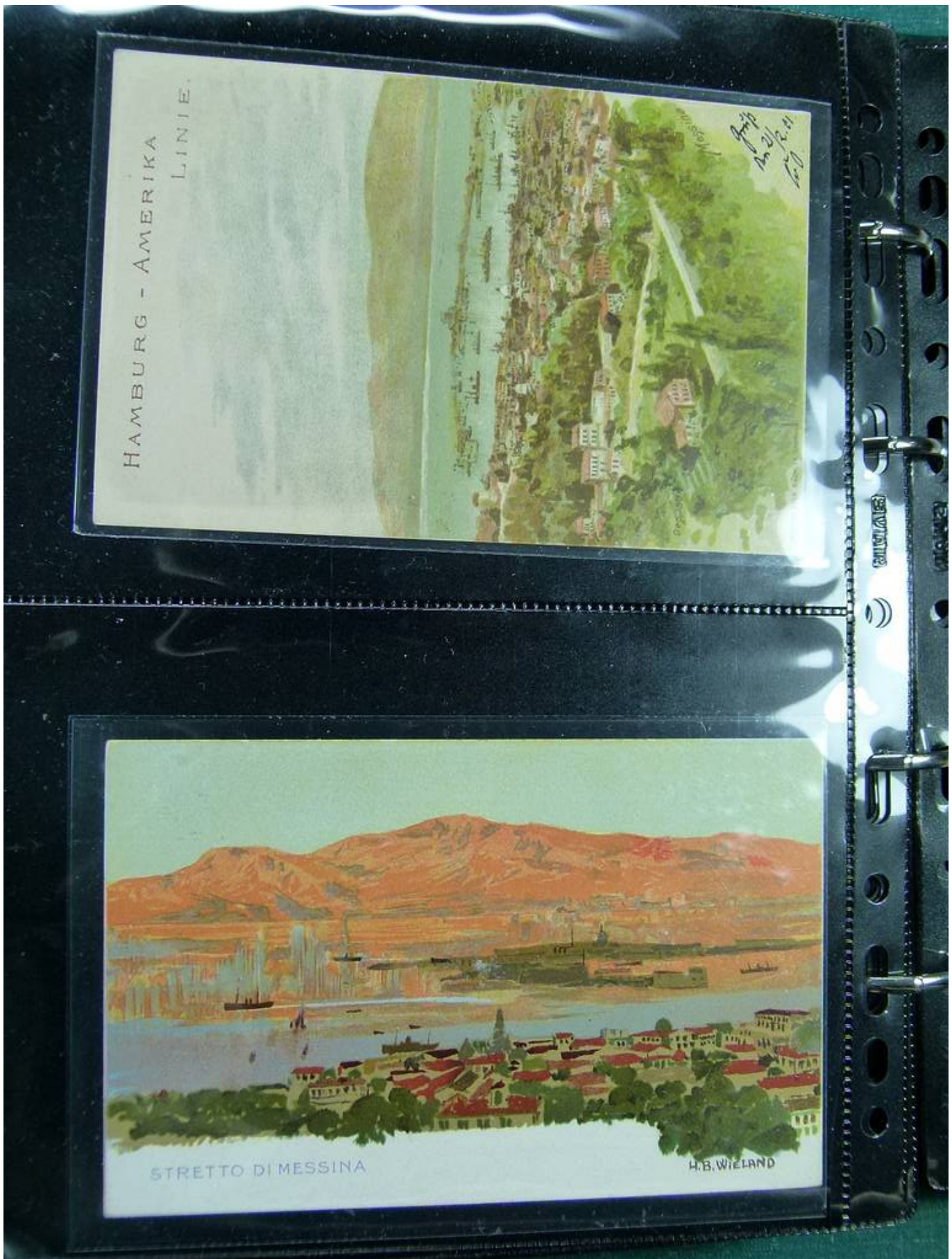




Foto nr.: 60





Foto nr.: 61





Foto nr.: 62



MESSINA - Edificio delle Scuole Comunali di Porta Imperiale

Il complesso delle scuole comunali "T. Cannizzaro" e "Galatti" pressoché ultimato. La sede della via Porta Imperiale è ancora in parte occupata da baracche



MESSINA - Panorama



Foto nr.: 63





Foto nr.: 64





Foto nr.: 65

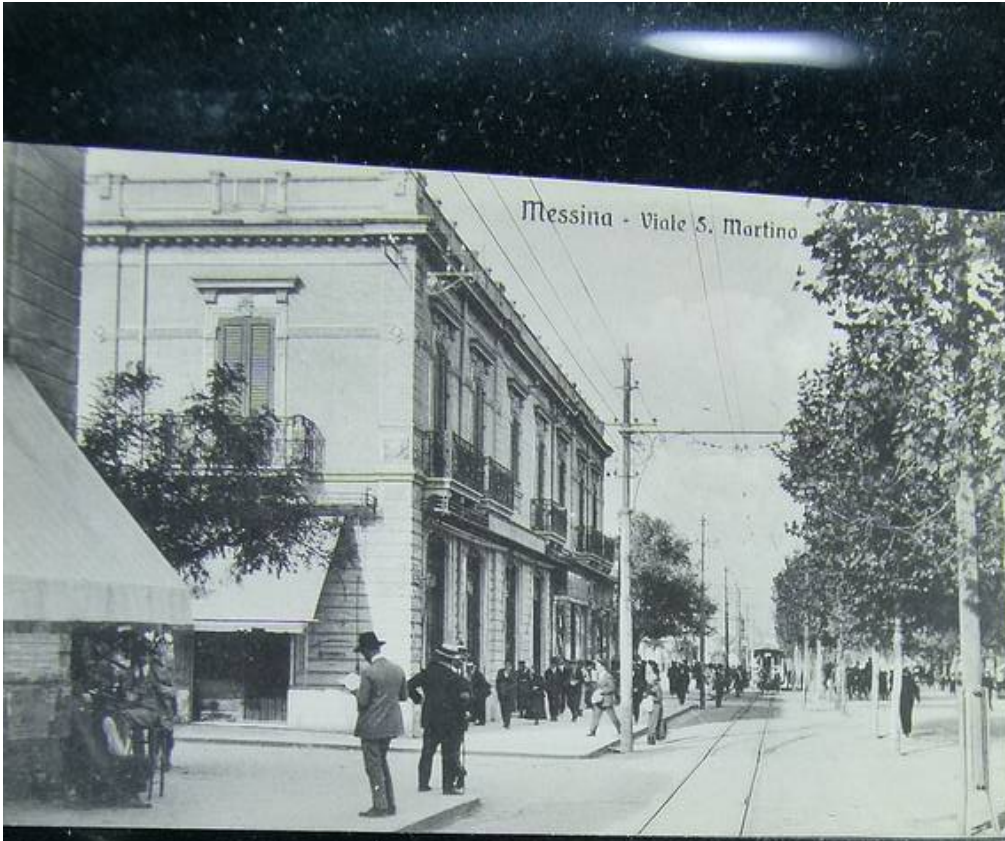




Foto nr.: 66





Foto nr.: 67

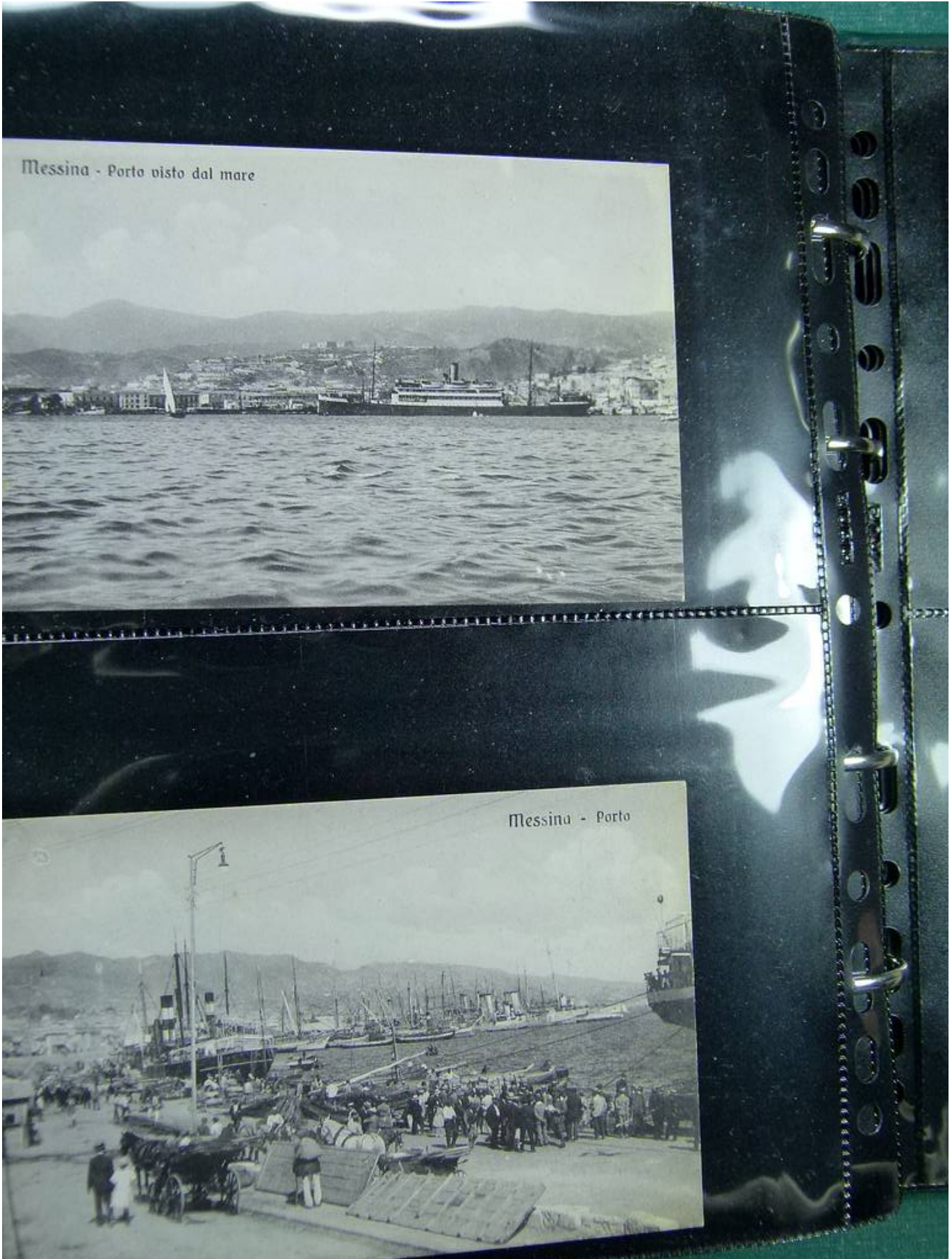




Foto nr.: 69

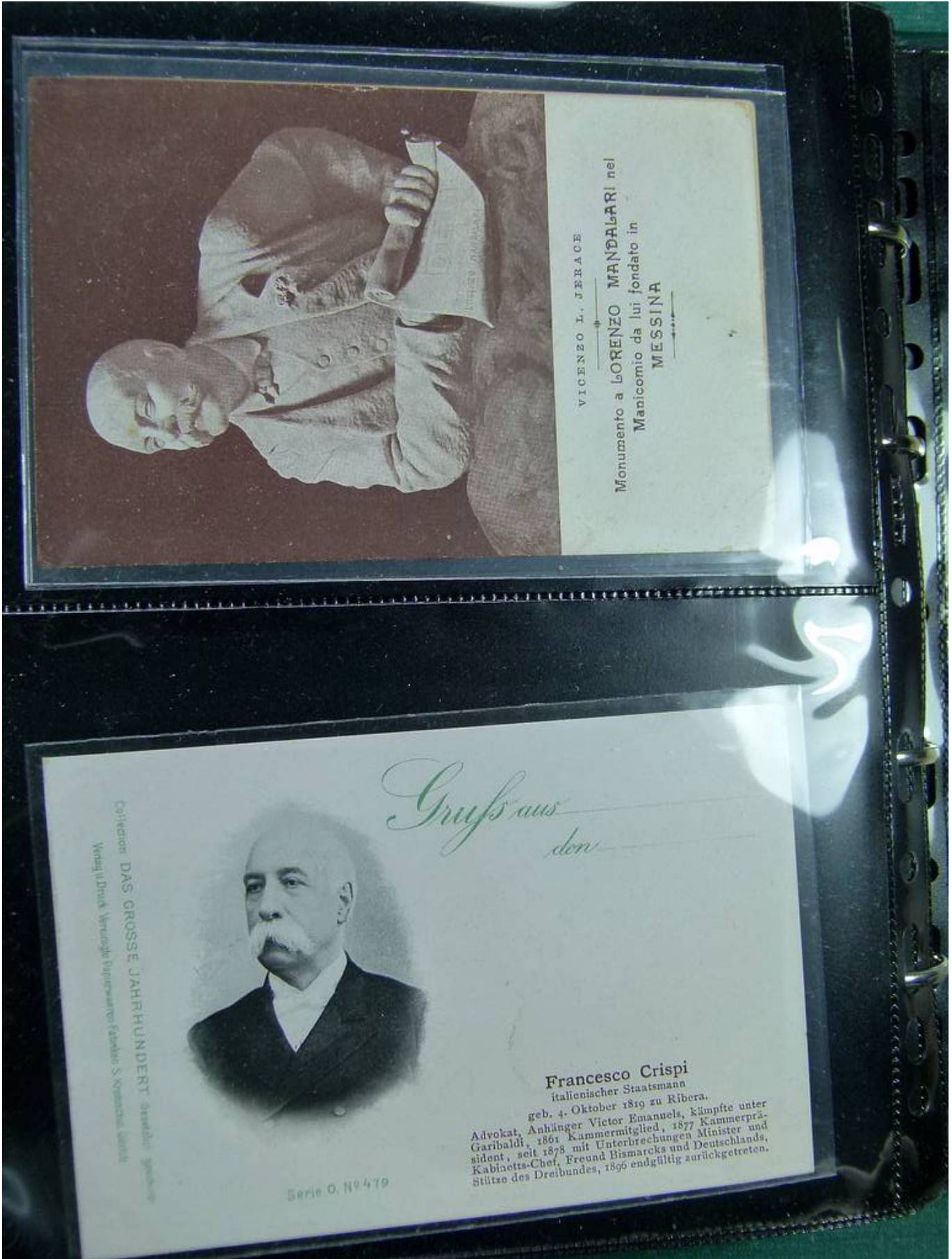




Foto nr.: 70





Foto nr.: 71





Foto nr.: 72





Foto nr.: 73

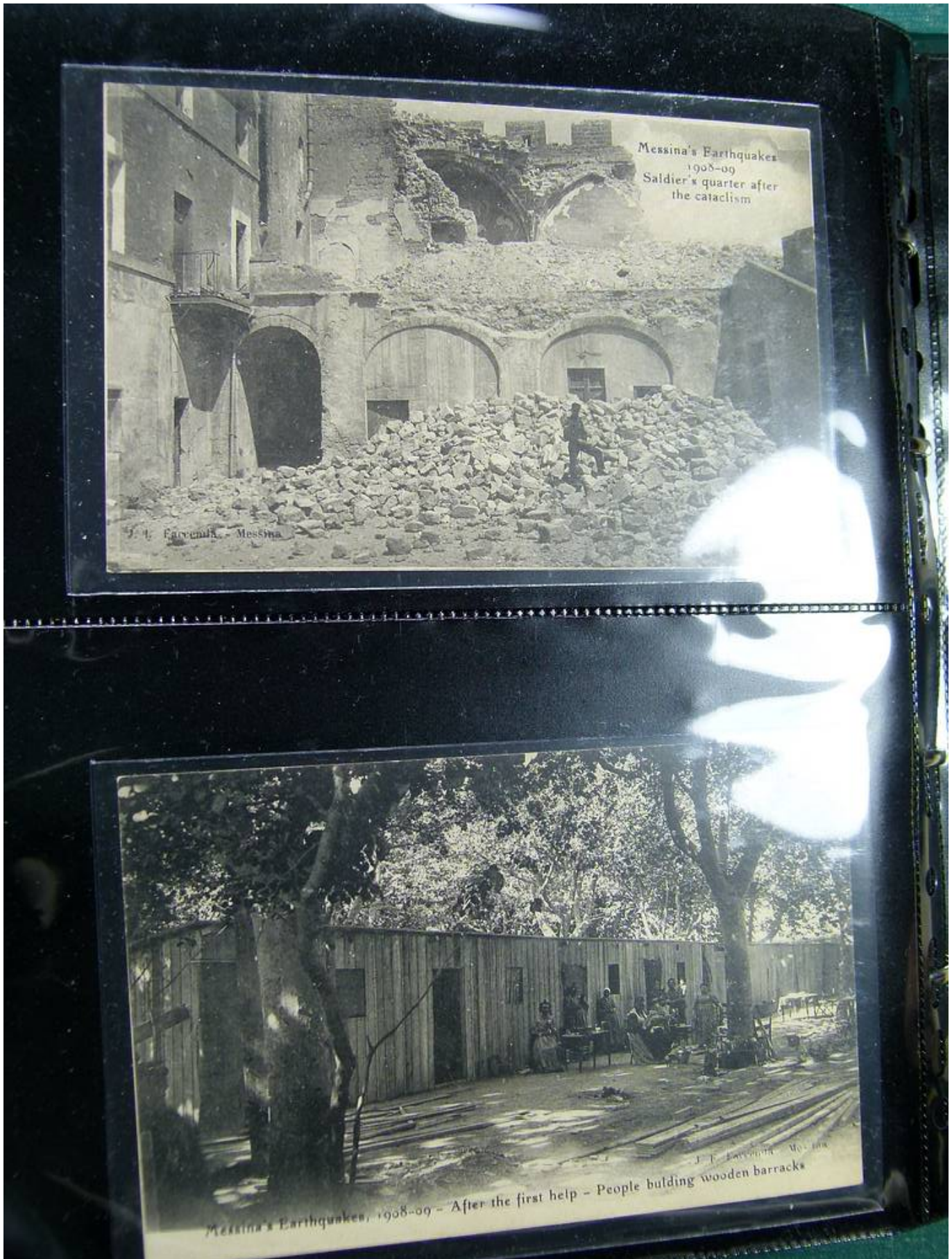




Foto nr.: 74





Foto nr.: 75





Foto nr.: 76





Foto nr.: 77





Foto nr.: 78

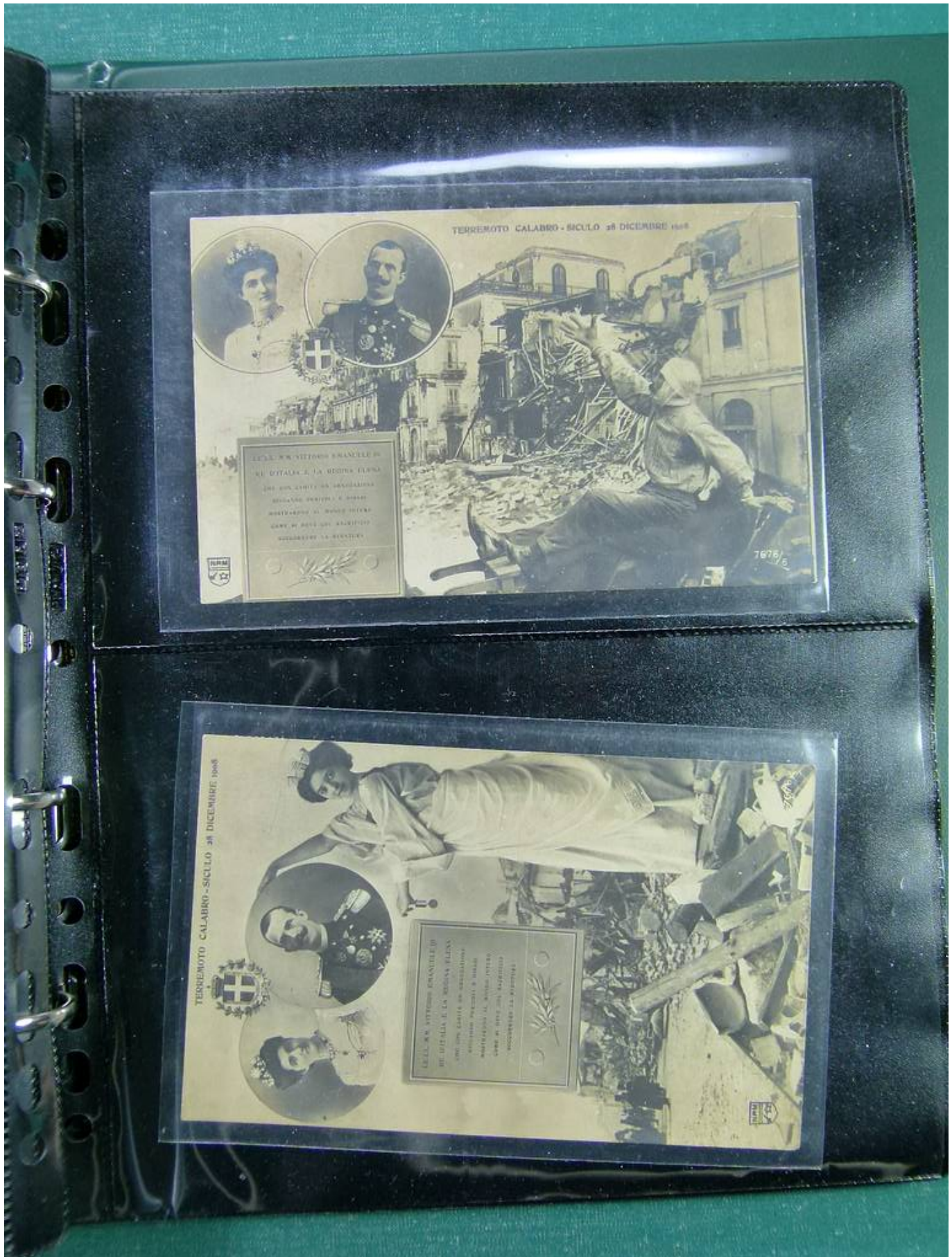




Foto nr.: 79





Foto nr.: 80

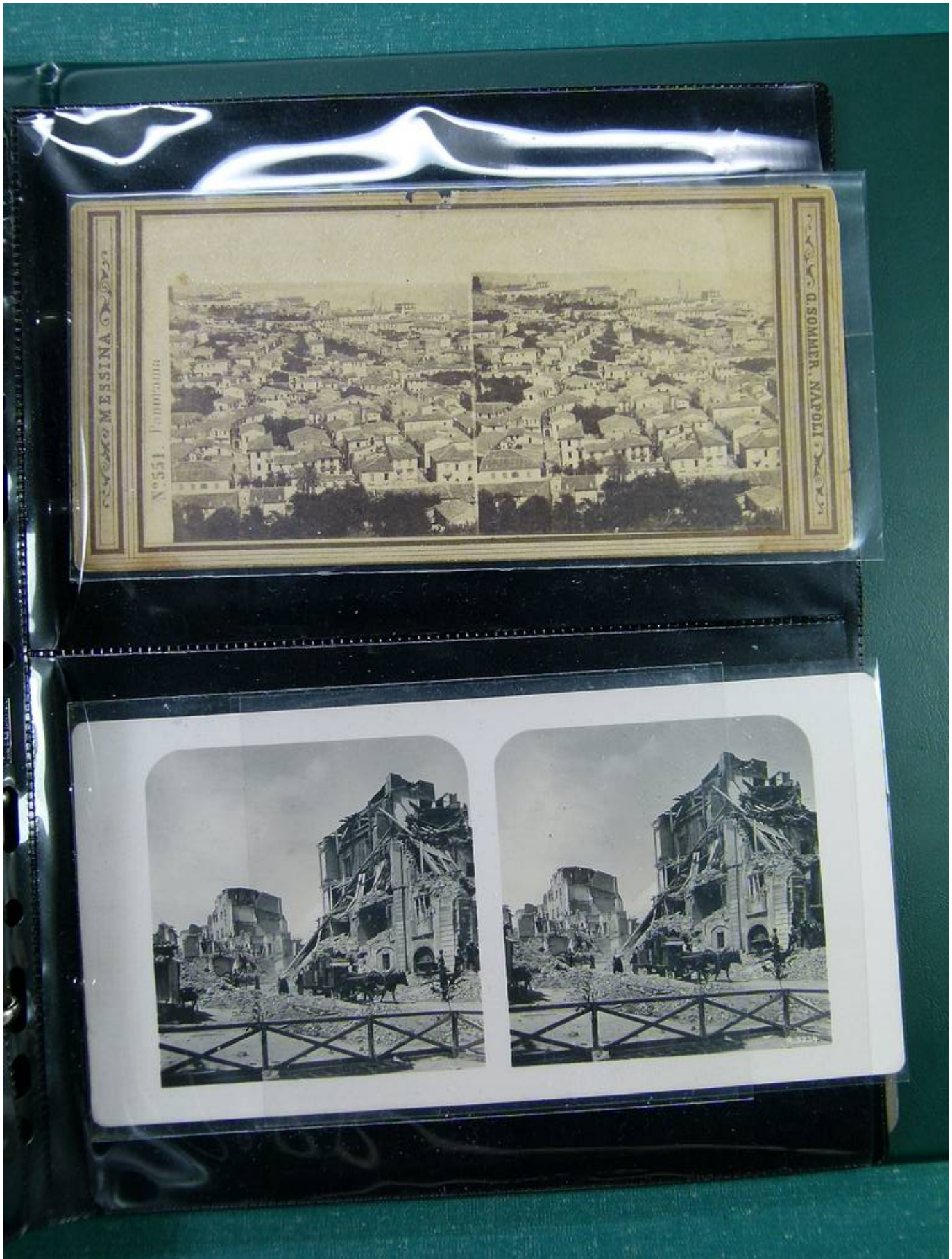




Foto nr.: 81

