



Lot nr.: L261458

Country/Type: Europe

French Colonies Collection, in stockbook, with new and used stamps.

Price: 100 eur

[[Go to the lot on www.sevenstamps.com](http://www.sevenstamps.com) ]

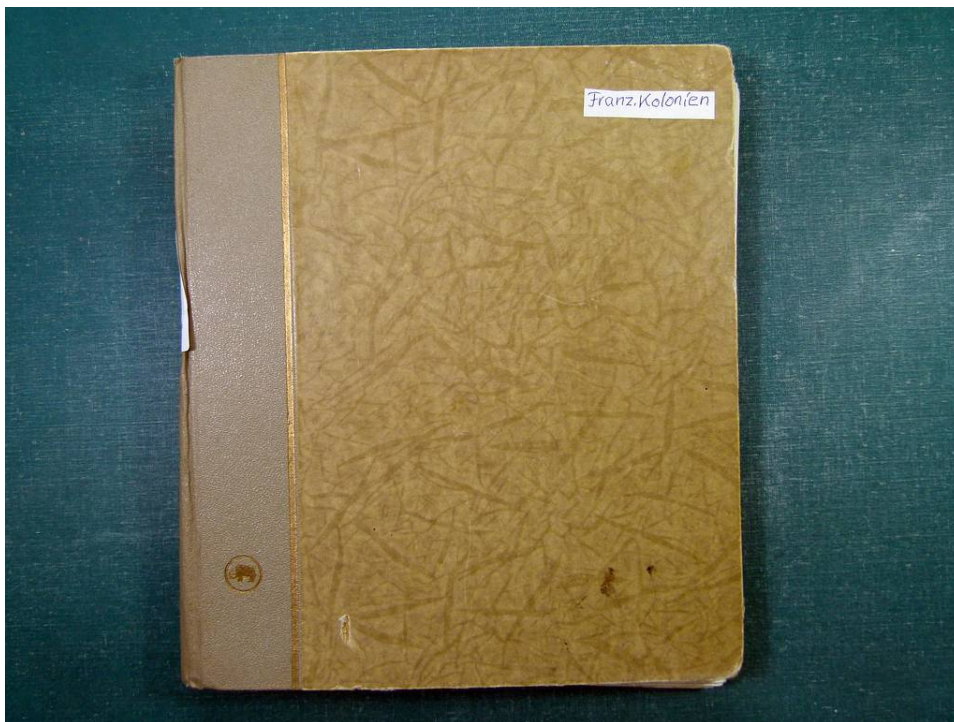




Foto nr.: 2





Foto nr.: 3





Foto nr.: 4





Foto nr.: 5







Foto nr.: 7





Foto nr.: 8





Foto nr.: 9





Foto nr.: 10



TUNIS.  
FR. PROTECTORAT.

TUNISIE.  
RÉGENCE FRANÇAISE.



Nr. 1

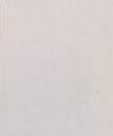
1888. [ ]



Nr. 1. 1 (cent.)  
schwarz \* blau—black  
\* blue—noir \* bleu.



Nr. 2. 2 c.  
braun—brown—brun.



Nr. 3. 5 c.  
grün—green—vert.



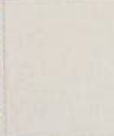
Nr. 4. 15 c.  
blau—blue—bleu.



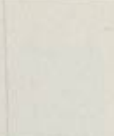
Nr. 5. 25 c.  
schwarz—black—noir.



Nr. 6. 40 c.  
rot—red—rouge.



Nr. 7. 75 c.  
rosa—rose.



Nr. 8. 5 fr.  
lila—lilac—lilas.

do. (Punktiertes Grund—Dotted ground—Fond pointillé.)



Nr. 9. 1 (cent.)  
schwarz \* blau—black  
\* lila—noir \* bleu.



Nr. 10. 2 c.  
braun—brown—brun.



Nr. 11. 5 c.  
grün—green—vert.



Nr. 12. 15 c.  
blau—blue—bleu.



Nr. 13. 25 c.  
schwarz—black—noir.



Nr. 14. 40 c.  
rot—red—rouge.



Nr. 15. 75 c.  
rosa—rose.



Nr. 16. 1 fr.  
oliv—olive.

1893/1902. do.



Nr. 17. 5 fr.  
lila—lilac—lilas.



Nr. 18. 5 (cent.)  
gelbgrün—yell. green  
vertjaune.



Nr. 19. 10 c.  
schwarz—black—noir.



Nr. 20. 10 c.  
rot—red—rouge.



Nr. 21. 15 c.  
blau—blue—bleu.



Nr. 22. 15 c.  
grau—grey—gris.



Nr. 23. 20 c.  
rot—red—rouge.



Nr. 24. 25 c.  
blau—blue—bleu.

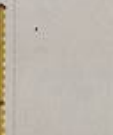
1902. (No. 19.)



Nr. 25. 35 c.  
braun—brown—brun.



Nr. 26. 75 c.  
braun—brown—brun.



Nr. 27. 2 fr.  
violett—violet.



Nr. 28. 25 + 15 c.  
blau—blue—bleu.



Foto nr.: 11





Foto nr.: 12





Foto nr.: 13





Foto nr.: 14

